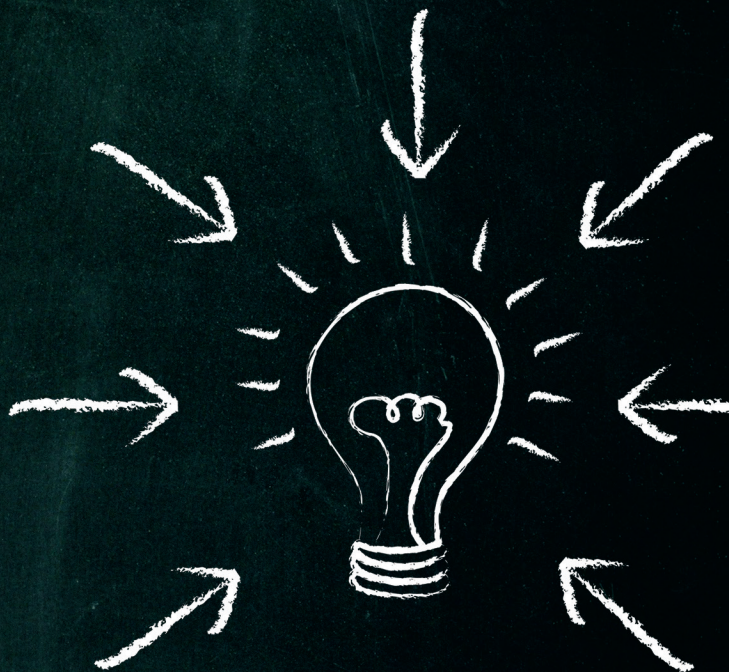


Mattel Children's Hospital **UCLA**

 UCLA Children's Discovery  
and Innovation Institute



JOIN US  
FOR A DAY OF

**DISCOVERY**

*2nd Annual*  
UCLA Children's Discovery and  
Innovation Institute Symposium  
*"Catalyzing and Expanding Interdisciplinary  
Collaboration in Translational Child Health"*

**May 28, 2015, 11:00 a.m - 6:00 p.m.**

Ronald Reagan UCLA Medical Center,  
Tamkin Auditorium, B Level

Brain, Behavior and Development: **Christopher Giza, MD**  
Cancer and Regeneration: **James Dunn, MD, PhD**  
Nutrition, Metabolism and Growth: **Tomas Ganz, MD, PhD**  
Infection, Inflammation and Immunity: **Donald Kohn, MD**

WELCOMING REMARKS KEYNOTE SPEAKER

**Sherin Devaskar, MD**  
Distinguished Professor,  
Executive Chair,  
Department of Pediatrics  
Executive Director, UCLA  
CDI Institute

**Jean-Laurent Casanova, MD, PhD**  
Professor, The Rockefeller University  
Head, St.Giles Laboratory of Human  
Genetics of Infectious Disease

FRIDAY GRAND ROUNDS

**Clifford Bogue, MD**  
Professor and Interim Chair,  
Pediatrics, Yale School of Medicine  
Chief Medical Officer  
Yale-New Haven Children's Hospital

REGISTER: [www.uclahealth.org/cdii](http://www.uclahealth.org/cdii)



This symposium is supported by a Catalyst Award from the  
UCLA Clinical and Translational Science Institute (CTSI)  
under NIH/National Center for Advancing Translational  
Science (NCATS) Grant Number UL1TR000124.

PLUS: NIH K12 Child Health Research Center Development Scholars & Pediatric Fellows

CONTACT: Candace J. Wilkinson, PhD, Scientific Officer, UCLA CDI Institute,  
310-794-4336, [cwilkinson@mednet.ucla.edu](mailto:cwilkinson@mednet.ucla.edu)