

# CASE-BASED LEARNING COLLABORATIVE ON STIMULANTS

## CME BI-WEEKLY SERIES

CENTER FOR BEHAVIORAL AND ADDICTION MEDICINE

UCLA DEPARTMENT OF FAMILY MEDICINE

1<sup>st</sup> and 3<sup>rd</sup> - Fridays at 12pm-1pm PT



---

# Medications with Evidence for Stimulant Use Disorder

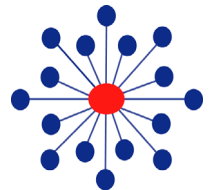
Case-Based Learning Collaborative on Stimulants CME Series

---

**Steve Shoptaw PhD**

**UCLA Department of Family Medicine**

**Friday, October 20, 2023**



# Disclosures

- None of the planners for this educational activity have relevant financial relationship(s) to disclose with ineligible companies whose primary business is producing, marketing, selling, re-selling, or distributing healthcare products used by or on patients, except:
- Dr. Shoptaw, speaker and faculty for this educational event has received clinical supplies for research from: Alkermes, Inc, Indivior, Inc, and Gilead Sciences, Inc. He provides consultation services to Aelis, Inc and to Clear Scientific, Inc.
- All of the relevant financial relationships listed for these individuals have been mitigated.



# Poll

1. Which of the following medications has an FDA approval for treatment of cocaine use disorder?
  - a) Naltrexone
  - b) Sertraline
  - c) Mirtazepine
  - d) Prazosin
  - e) None of the above.
  
2. Which of the following medications has evidence for treatment of methamphetamine use disorder but is not technically FDA approved for this use?
  - a) Mirtazepine
  - b) Buprenorphine
  - c) Methylphenidate
  - d) Vortioxetine
  - e) None of the above.



# Objectives

- Proficiency in:
    - Culture
    - Current epidemiology
    - Common comorbid conditions
  - Understand the evidence regarding for medications for methamphetamine use disorder that have strongest data supporting use
  - Understand the evidence for the range of medications that have limited evidence of efficacy for methamphetamine use disorder
-

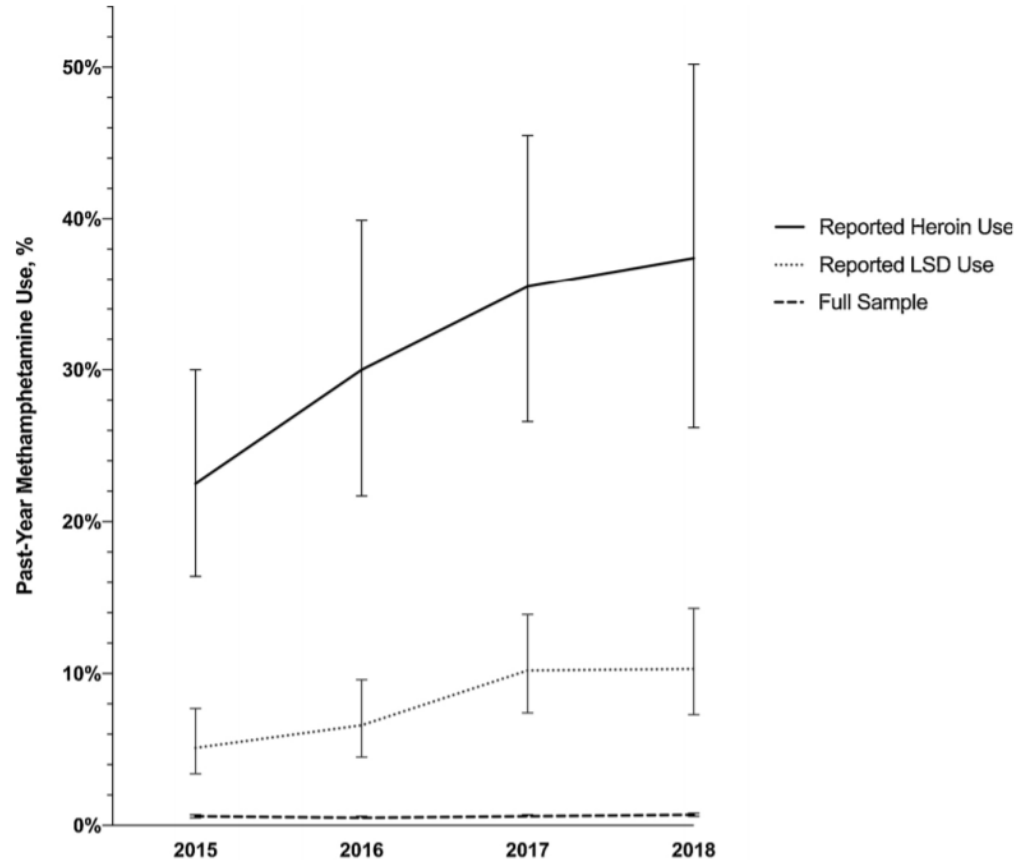
# Methamphetamine Effects and Function Shape Treatment Goals

Physical	Psychological
↑ Heart Rate	↑ Confidence
↑ Blood Pressure	↑ Alertness
↑ Pupil Size	↑ Mood
↑ Respiration	↑ Sex Drive
↑ Sensory Acuity	↑ Talkativeness
↑ Energy	↑ Energy
↓ Appetite	↓ Boredom
↓ Sleep	↓ Loneliness
↓ Reaction Time	↓ Timidity

- Gay Men
- Shift Workers
- Bikers – Gangs
- Women
- Rural
- Youth
- Homeless



# NSDUH, Methamphetamine U.S.



- General population estimates remain low (0.7%)
- Dramatic rises in meth use among people who report using heroin and LSD

ADDICTION

ADDICTION OPINION AND DEBATE

SSA SOCIETY FOR THE STUDY OF ADDICTION

doi:10.1111/add.15458

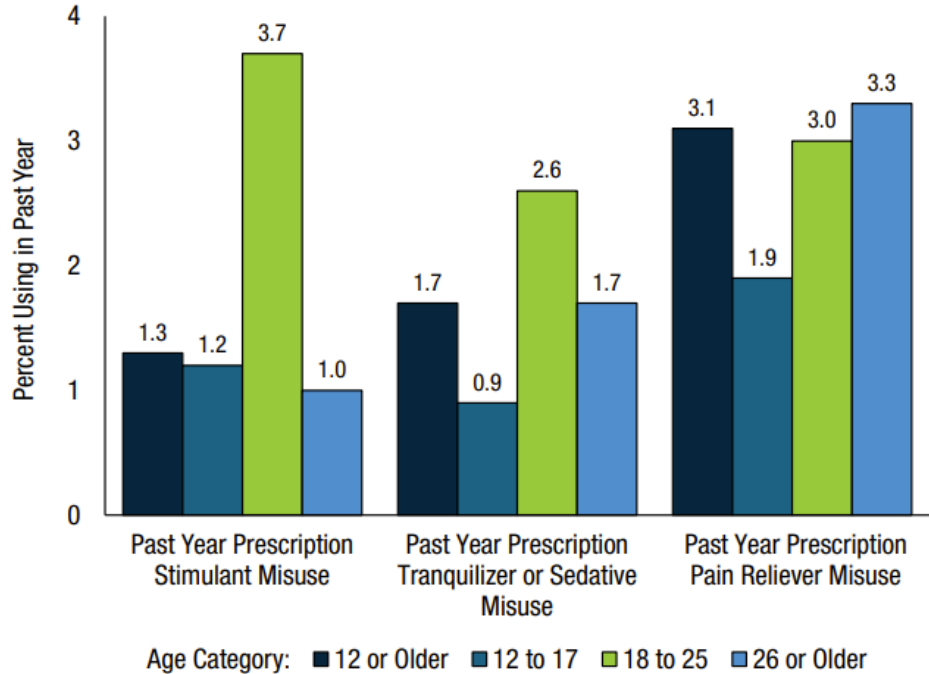
**Heroin use cannot be measured adequately with a general population survey**

Peter Reuter<sup>1,2</sup> , Jonathan P. Caulkins<sup>3</sup>  & Greg Midgette<sup>1</sup> 

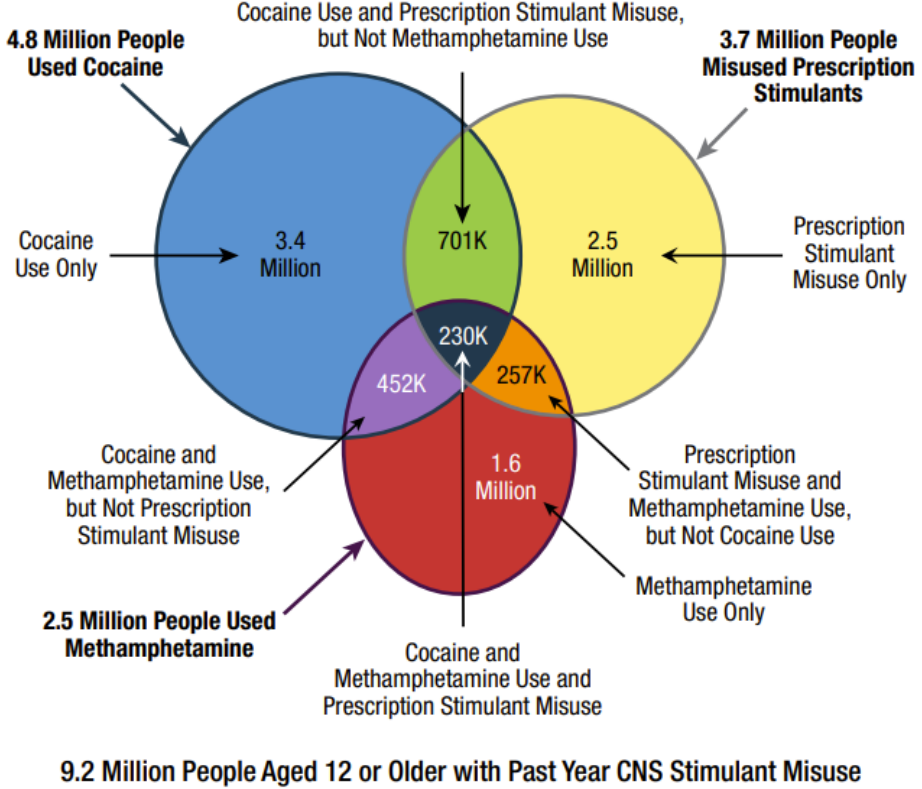
Palamar JJ. 2020. Drug Alc Dep. 2020; 3;213:108089.

# CNS Stimulant Misuse in the Past Year, 2021

**Figure 20. Past Year Prescription Stimulant Misuse, Past Year Prescription Tranquilizer or Sedative Misuse, and Past Year Prescription Pain Reliever Misuse: Among People Aged 12 or Older; 2021**



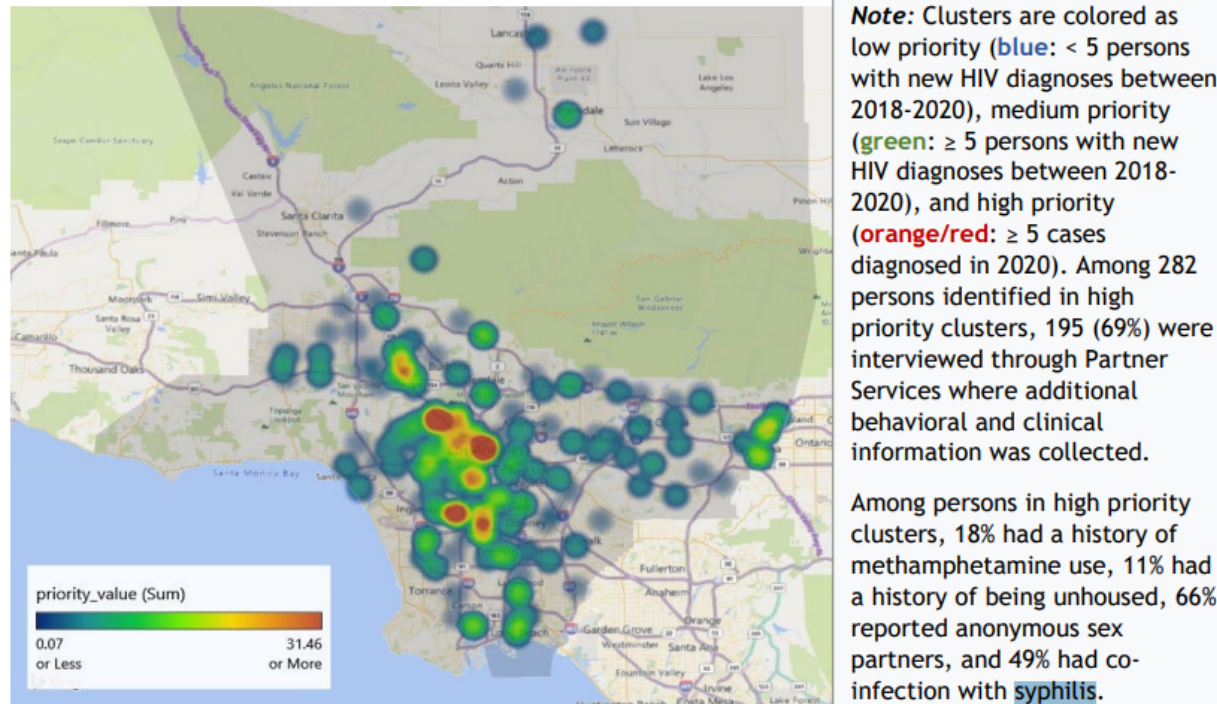
**Figure 25. Past Year Central Nervous System (CNS) Stimulant Misuse: Among People Aged 12 or Older; 2021**





# Syphilis, methamphetamine and HIV incidence in LA County - Syndemics

Figure 26: Molecular HIV cluster cases by zip code and priority level, LAC, 2018-2020



The highest number of high priority clusters were in West Hollywood, Downtown, and South Los Angeles zip codes.

[http://publichealth.lacounty.gov/dhsp/Reports/HIV/2020AnnualHIVSurveillanceReportUpdated9-2021\\_fig1fig2update.pdf](http://publichealth.lacounty.gov/dhsp/Reports/HIV/2020AnnualHIVSurveillanceReportUpdated9-2021_fig1fig2update.pdf)

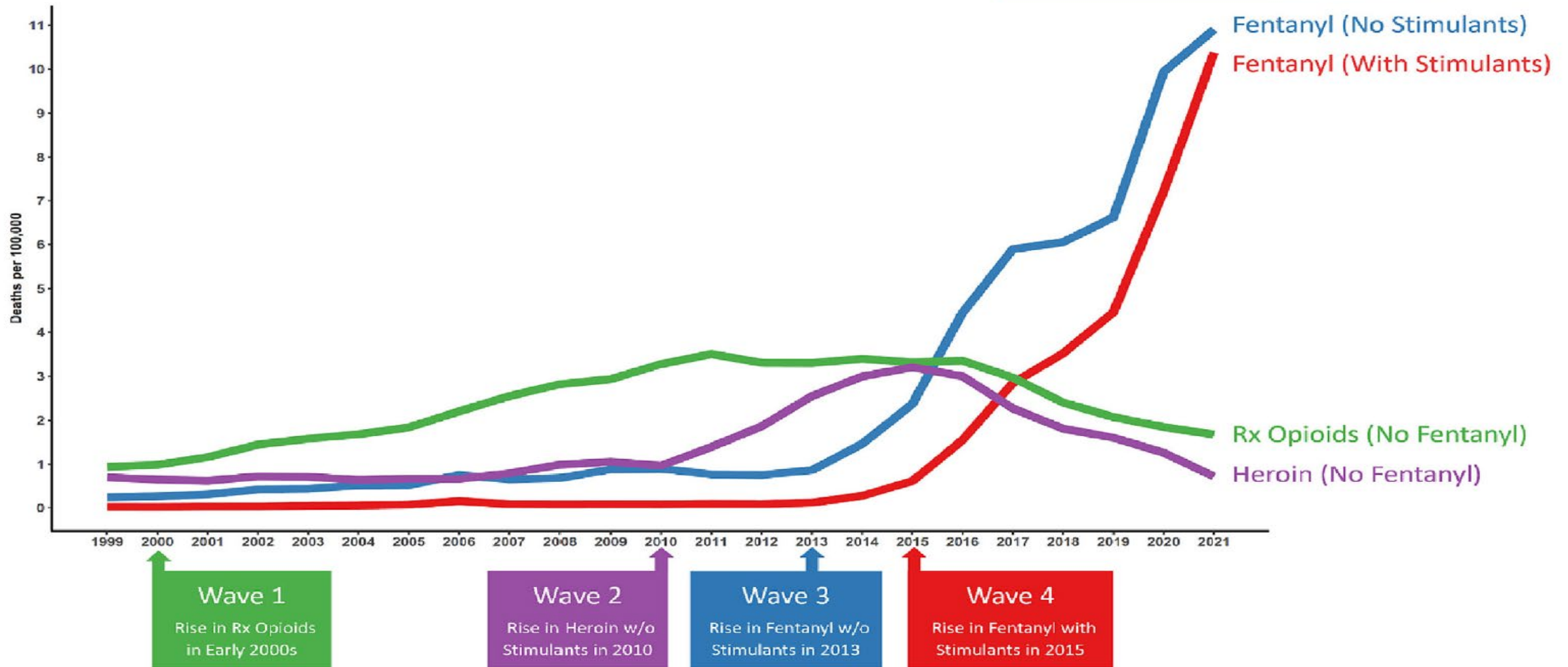
# Overdose Crisis 4<sup>th</sup> Wave: Poly-Substance Use

CHARTING THE FOURTH WAVE: POLYSUBSTANCE TRENDS

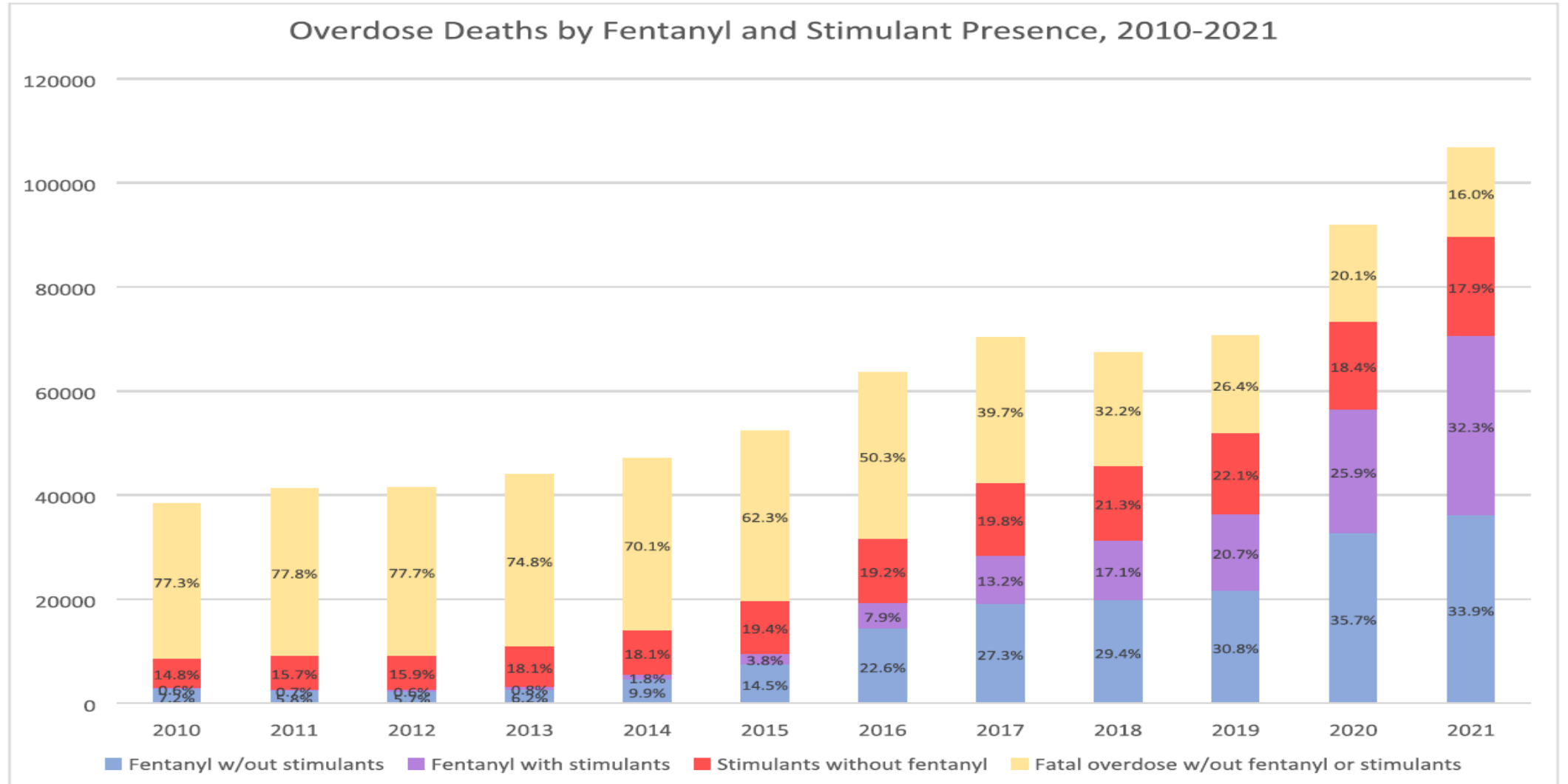
ADDICTION

SSA

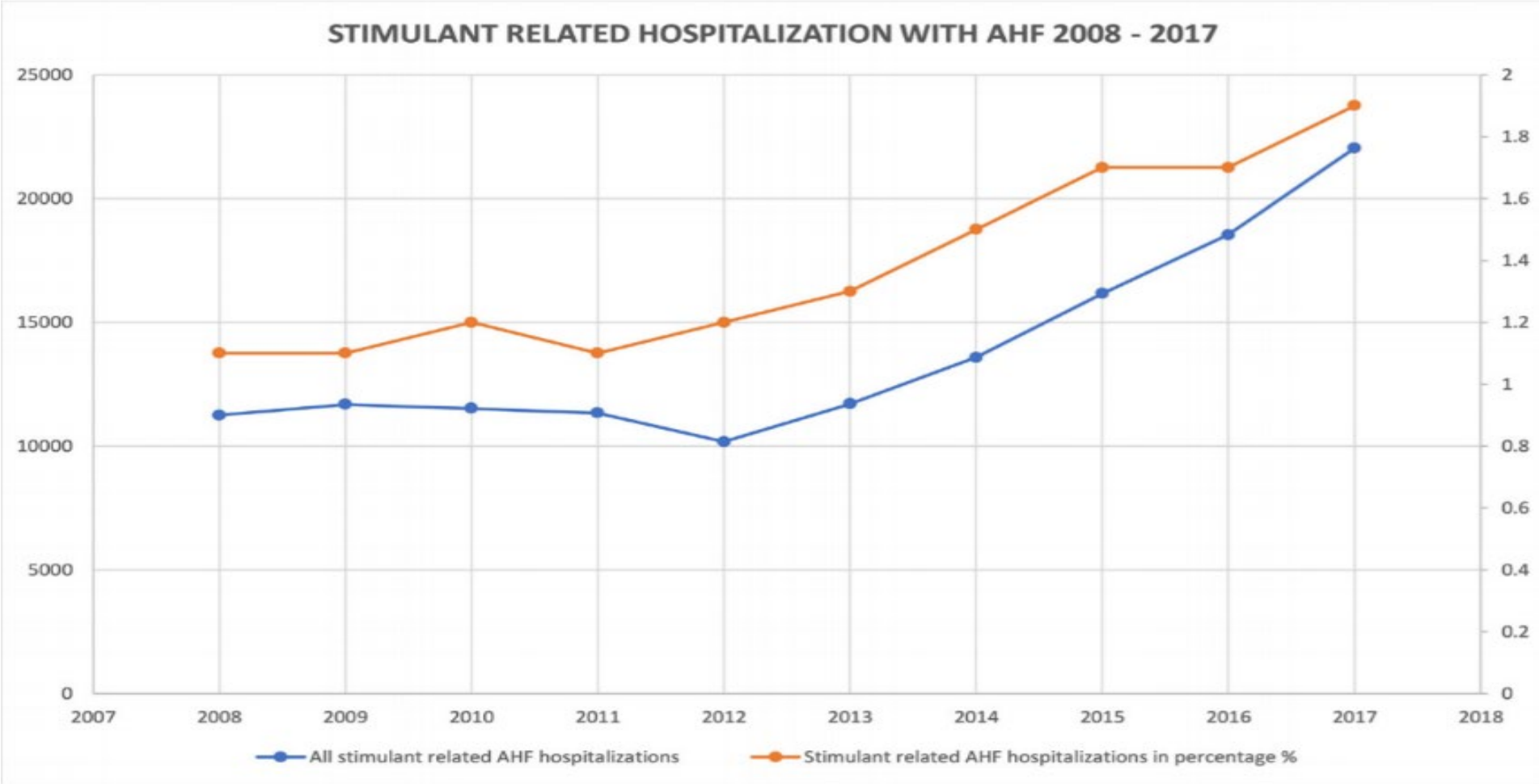
3



# Overdose Deaths



# Increase in Prevalence of Acute Heart Failure by Stimulant Use; National Inpatient Sample



Shetty et al. 2021 *Int J Cardiology*. 331: 158-163

# Status of Medication Development for Stimulant Use Disorder

There are no FDA approved medications for stimulant use disorder

No medications that might be FDA approved within the next five years

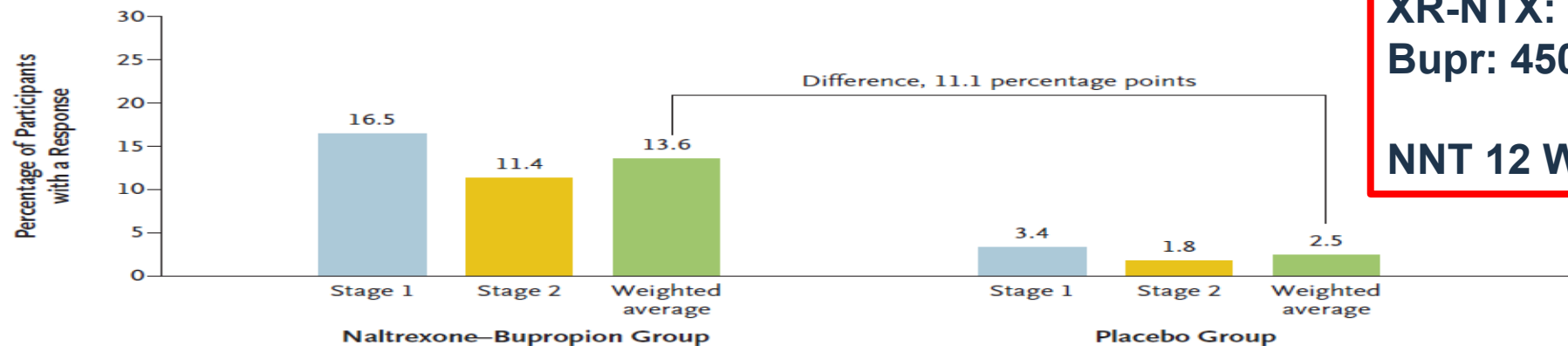


# **Strongest Evidence for Use: Methamphetamine Use Disorder**

**XR-NTX @ 3 weeks + bupropion @ 450 q d  
Mirtazapine @ 30mg q d**

# Broadly Effective Medication for Meth Use Disorder

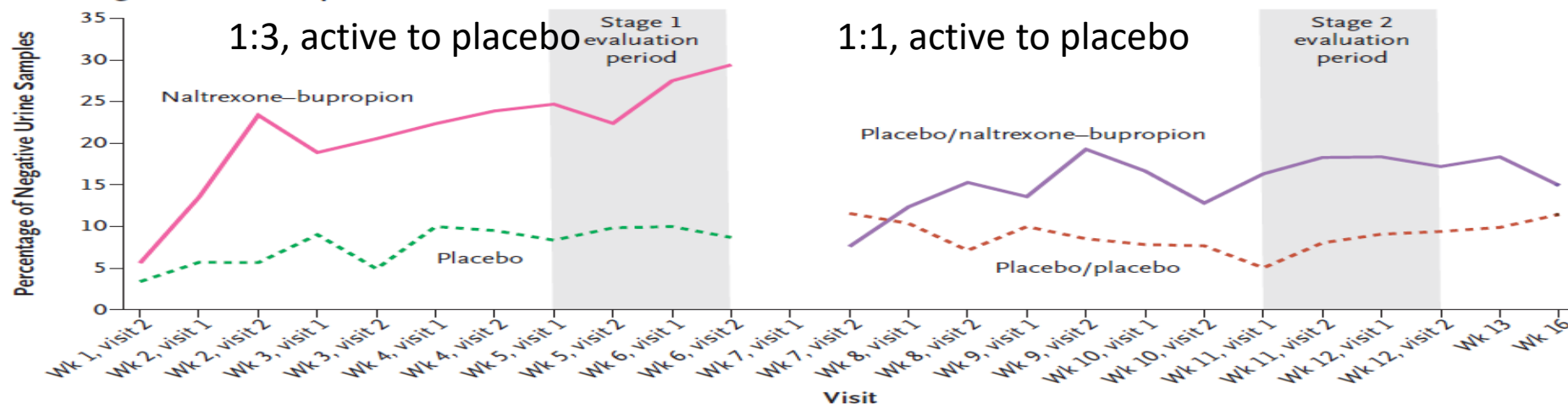
**A Responses**



**XR-NTX: 380mg @ 3 wks**  
**Bupr: 450mg @ day**

**NNT 12 Wks=9**

**B Methamphetamine-Negative Urine Samples**



# Benefits of XR-NTX+Bupropion Continue to Accrue

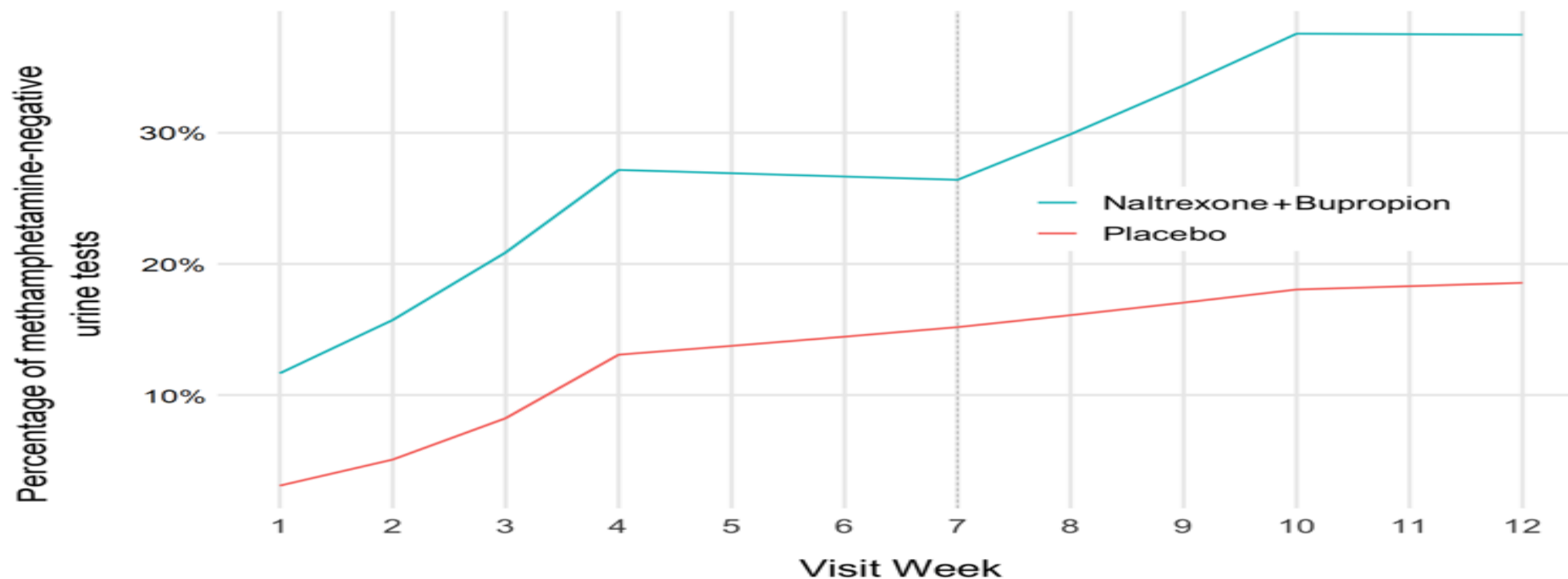


Figure 1. Marginal predicted mean percentage of methamphetamine-negative urine tests over 12 weeks while on naltrexone plus bupropion versus placebo



# Culture Links with Medication Effects: MSM vs MSW

**Table 3**

Comparison of the adjusted treatment effect for extended-release naltrexone plus bupropion (XR-NTX + BUP) versus placebo for MSM/W and MSW participants.

Subgroup	Stage 1		Stage 2			NTX-BUP vs Placebo Treatment Effect*				
	# Randomized	Placebo Responder Rate	XR-NTX + BUP Responder Rate	# Re-randomized	Placebo Responder Rate	XR-NTX + BUP Responder Rate	Treatment Effect ( <i>h</i> )	Standard Error of <i>h</i>	Number Needed to Treat	p-value
MSM/W	151	(3/108) 0.0278	(6/43) 0.1395	90	(2/47) 0.0426	(10/43) 0.2326	0.1479	0.0357	6.7	0.04
MSW	95	(4/69) 0.0580	(2/26) 0.0769	50	(0/22) 0.0000	(1/28) 0.0357	0.0227	0.0484	41.3	

MSM/W: men who have sex with men only or with both men and women.

MSW: men who have sex exclusively with women.

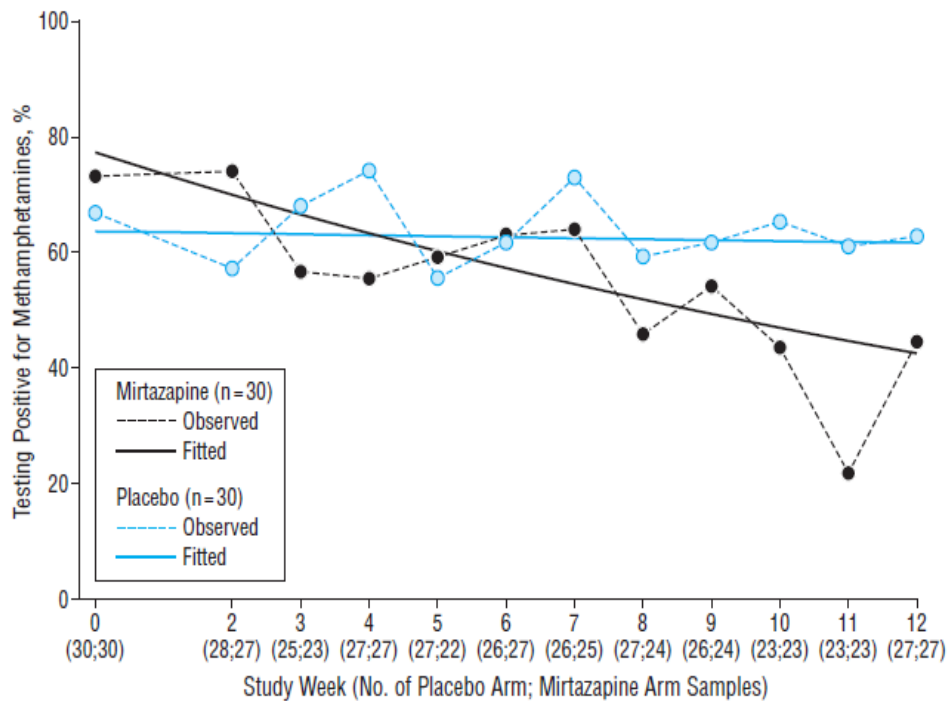
Treatment Effect (*h*): between-group difference (active medication vs placebo) in the weighted average of Stage 1 and Stage 2 respond rates.

\*All models were adjusted for study site, age, race, ethnicity, education, employment, HIV serostatus, and baseline methamphetamine use.

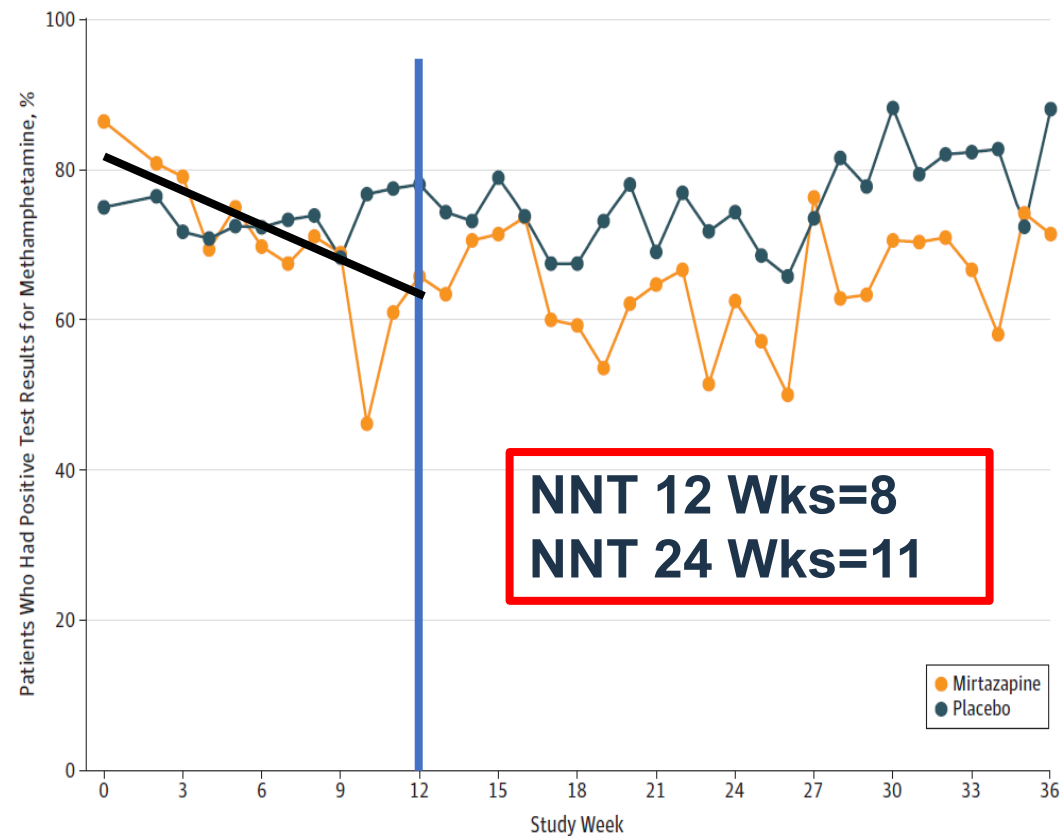
# Findings and Targets

- Mechanism for combination medication is unknown – but the combination produces the strongest signal of efficacy in over 30 years of addiction research
- Fully powered trial: 403 participants randomized
- Primary outcome response: # participants with two weeks of meth-negative urine screens in weeks 5+6; weeks 11+12
- 450 mg bupropion is a significant dose of a weak stimulant
- XR-NTX produces a significant dose full mu opioid antagonist and kappa opioid antagonist
- Combination produces synergized effect
  - Similarly, lower doses efficacious for weight loss (Contrave™)

# Pharmacotherapy for Stimulant Use in MSM: Mirtazapine 30 mg/day



Colfax et al. *Archives Gen Psych*, 2011 68: 1168-1175



Coffin et al., doi:10.1001/jamapsychiatry.2019.3655

# Mirtazapine Meta-Analysis

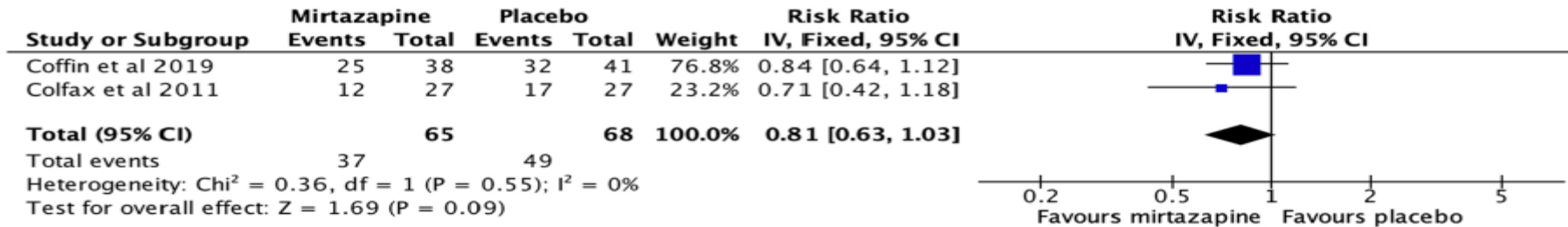


Fig. 2. : Forest plot and meta-analysis of reduction in methamphetamine positive urine toxicology screens at 12 weeks.

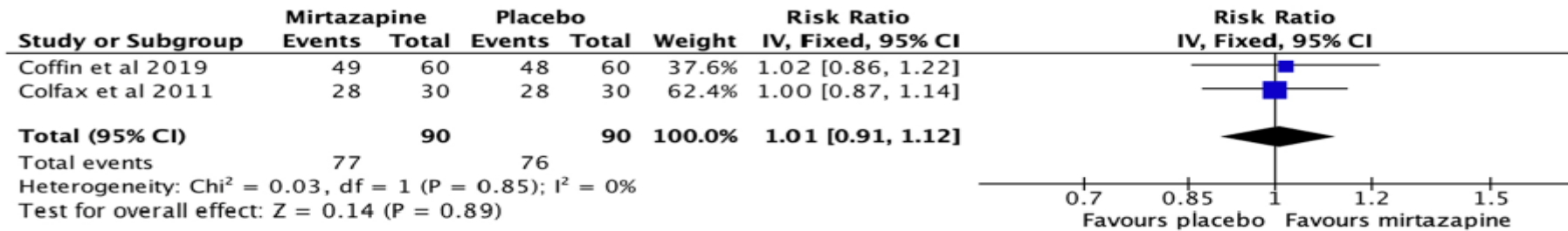


Fig. 3. : Forest plot and meta-analysis of retention in treatment at 12 weeks.

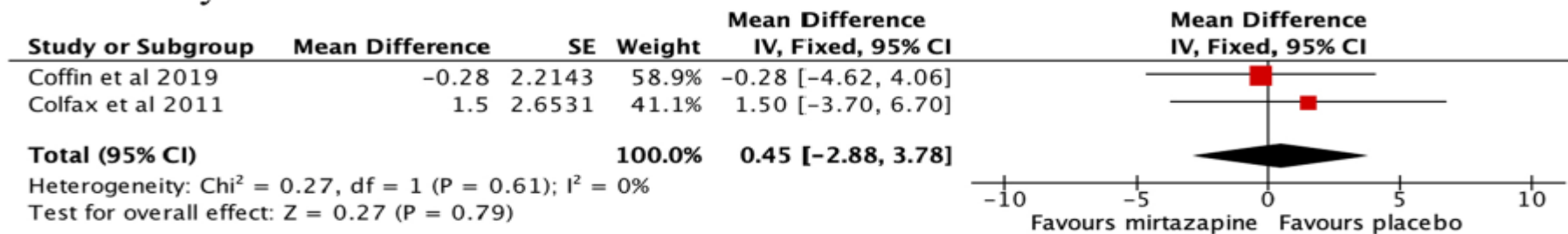


Fig. 4. : Forest plot and meta-analysis of reduction in depression symptom severity as measured by the CES-D scale at 12 weeks.

# Findings and Targets

- Main strengths for mirtazapine for methamphetamine
  - Study findings replicate! Hardest thing to do in science is the same thing twice
  - Slopes of meth reduction measured by positive urine drug screens over time are parallel in the two trials
- Mechanism of response
  - FDA approved antidepressant – so may be reducing depressive symptoms during discontinuation of methamphetamine
  - More likely mechanism is restoration of sleep architecture – participants all recognized better sleep during the trial; sleep disturbance also is a common depressive symptom
- Potential downsides
  - Weight gain significant, which may be unacceptable for some MSM and for some women
  - Both studies conducted so far are in MSM and trans women; need replication in general broad groups – trial ongoing in Australia to advise use in outpatient clinic settings
    - Many of study assessments in that multisite trial are conducted using telehealth visits

# ASAM Stimulant Guideline Systematic Review



# Psychiatric Medications

Medication/Class	Conditions	Outcomes	Reference
Bupropion	6 studies	No significant signal to reduce MA use 2 <sup>o</sup> ↓ for 150mg bid in lower use (5) ↓ ad libitum smoking (6)	1-6
Sertraline	Sert 50mg bid, CM	Sertaline less likely to achieve MA 3 wk abstinence	7
Atomoxetine	80mg/d	In OUD+ATS; ↓ MA use, but weak signal	8
Aripiprazole, methylphenidate	Arip = 15mg/d Methyl = 54mg/d	Arip ↑ MA+ UDS vs placebo Methyl ↓ MA+ UDS vs placebo	9
Topiramate	Top 200mg/d	In OUD+ATS; ↓ MA+ UDS at 6, not 12 weeks, ASI drug use severity and need; no diff craving or dep	10
Oxytocin	40 IU (4 weeks)	↓ depression, craving; ↓ ACTH, ↓cortisol	11

For systematic review, see Siefried KJ, et al. CNS Drugs. 2020 Apr;34(4):337-365.

For Practice Guideline: <https://www.asam.org/quality-care/clinical-guidelines/stimulant-use-disorders>

# Psychostimulants

Medication/Class	Conditions	Outcomes	Reference
<b>d-Amphetamine</b>	30mg/d, 60mg/d	↓ in craving, withdrawal severity	12
	110mg/d	↓ in withdrawal severity	13
<b>Methylphenidate</b>	54mg/d	↑ in retention at 6 wks	14
	54mg/d	2° ↓ MA use at 10 wks	15
	54mg/d	↓ craving, fewer MA+ UDS, ↓ dep	16
<b>Modafinil</b>	3 studies	No consistent signal	17-19
<b>Amineptine</b>	300mg/d	↓ withdrawal symptoms (?), now off mkt	20

For systematic review, see Siefried KJ, et al. CNS Drugs. 2020 Apr;34(4):337-365.

For Practice Guideline: <https://www.asam.org/quality-care/clinical-guidelines/stimulant-use-disorders>



# GABA & Opioid Medications

<b>Medication/Class</b>	<b>Conditions</b>	<b>Outcomes</b>	<b>Reference</b>
<b>Gabapentin+Baclofen</b>	GPN – 800mg/tid B – 20mg tid	No differences	21
<b>Buprenorphine</b>	6mg/d SL Bupe	↓ craving, fewer MA+ UDS	22
<b>Buprenorphine, methadone</b>	8mg/d SL Bupe 40mg/d methadone	No differences	23
<b>XR-NTX</b>	380mg Injection	No differences	24, 25
<b>Naltrexone</b>	1000mg implant	No differences	26
<b>Naltrexone</b>	50mg/d	↓ MA+ UDS	27

For systematic review, see Siefried KJ, et al. CNS Drugs. 2020 Apr;34(4):337-365.

For Practice Guideline: <https://www.asam.org/quality-care/clinical-guidelines/stimulant-use-disorders>

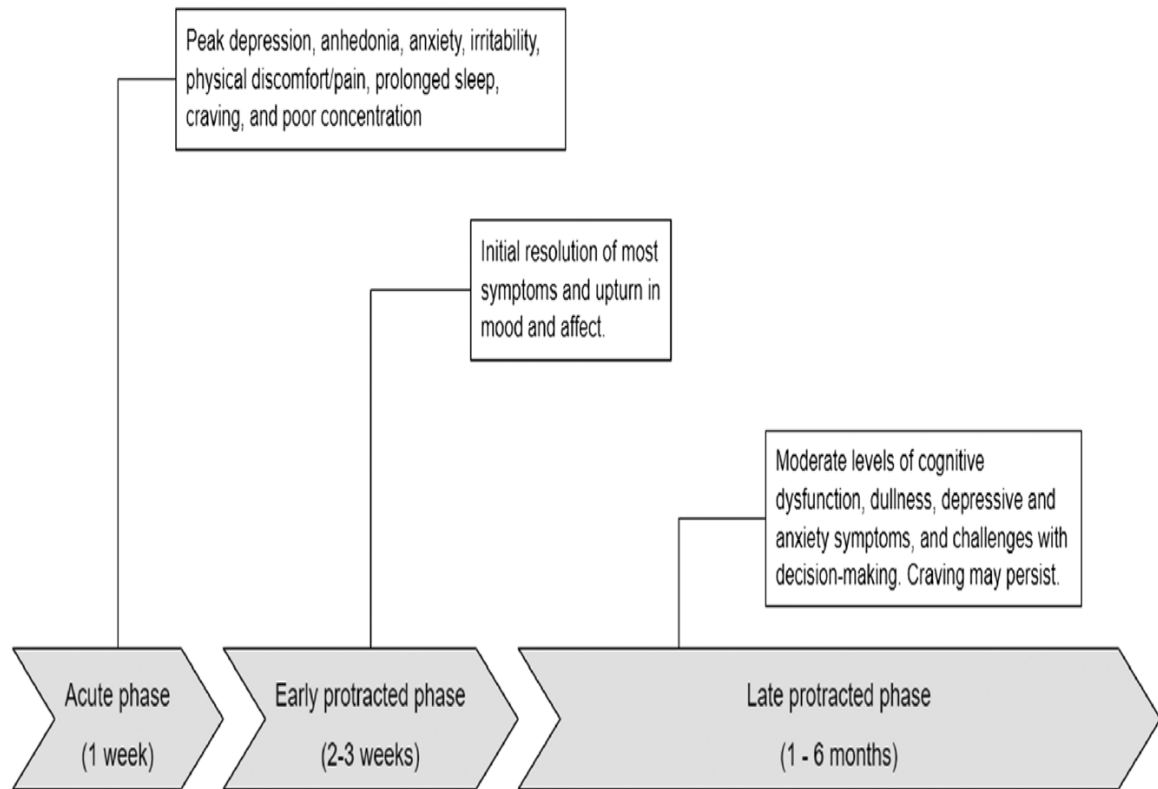
# Other Mechanisms

<b>Medication/Class</b>	<b>Conditions</b>	<b>Outcomes</b>	<b>Reference</b>
<b>Ondansetron (5HT3)</b>	0.5mg, 2mg, 8mg/d	No differences; 5-hour half-life	28
<b>Varenicline</b>	1mg bid	No differences; reduced smoking	29
<b>Riluzole</b>	50mg/d	↑ retention and abstinence	30
<b>NAC+Naltrexone</b>	NAC - 2400mg/d NTX – 200mg/d	No differences	31
<b>NAC</b>	NAC – 2400mg/d	No differences	32
<b>PROMETA</b>	Flumazenil 2mg IV Gabapentin 1200/d Hydroxyzine 50/d	2 studies; No differences	33, 34
<b>tDCS</b>	Active	↓ craving ↑ neurocog (35) ↓ craving ↑ memory tests (36)	35, 36
<b>Meth Psychosis</b>	6 antipsychotics	Olanzapine, Quetiapine preferred for antipsychotic effects; no effect on MA	37

For systematic review, see Siefried KJ, et al. CNS Drugs. 2020 Apr;34(4):337-365.

For Practice Guideline: <https://www.asam.org/quality-care/clinical-guidelines/stimulant-use-disorders>

# Withdrawal



**FIGURE 1** Summary of stimulant withdrawal symptoms across different phases (with time-frame following abstinence)

- Amineptine is the only medication that shows strong efficacy for withdrawal symptoms (20).
  - Strong stimulant, agonist effects
  - Still off-market in most parts of the world
- Overall, there is inconsistent signal for biomedical treatments on MA withdrawal
- Symptom relief for MA withdrawal seen for a few medications (mirtazapine, naltrexone, bupropion) and repetitive transcranial magnetic stimulation during acute (first week), early protracted (weeks 2–4) and late protracted (> 4 weeks) withdrawal phases

For Clinical Review, see Li MJ et al. *Addiction*. 2023 Apr;118(4):750-762.

For Systematic Review, see Acheson LS et al. *Drug Alcohol Rev*. 2023 Jan;42(1):7-19.

# Addressing Cardiovascular Insult in People Who Use Methamphetamine

- Ongoing use of methamphetamine causes cardiovascular insult that links to increases in hospital for cardiac diseases
- Methamphetamine is causal in ~50% of cases of pulmonary arterial hypertension (Zamanian RT et al. Am J Respir Crit Care Med. 2018; 197:788-800)
- Raises the question of using statins in people actively using methamphetamine

# Summary Current Evidence

After 25 years, there are some signals for efficacy, though there still is no FDA approved treatment for cocaine or methamphetamine addiction:

- Mirtazapine effects in MSM are impressive, particularly replication
  - Effect is reduction in use, not abstinence (like naltrexone for heavy alcohol drinking)
  - So far only tested in San Francisco and only in MSM
- Large trial, strong signal for XR-NTX+Bupropion over placebo for reducing methamphetamine use

Other medications with mixed mechanisms show little signal

Strong evidence for use of antipsychotics for psychosis

Some evidence for symptom relief for withdrawal

**Evidence to consider medication as a foundation of treatment for stimulant use disorder**



# References

1. Elkashef AM, et al. Bupropion for the treatment of methamphetamine dependence. *Neuropsychopharmacology*. 2008;33(5):1162–70.
2. Anderson AL, et al. Bupropion for the treatment of methamphetamine dependence in non-daily users: a randomized, double-blind, placebo-controlled trial. *Drug Alcohol Depend*. 2015; 150:170-4.
3. Heinzerling KG, et al. Pilot randomized trial of bupropion for adolescent methamphetamine abuse/dependence. *J Adolesc Health*. 2013; 52(4):502–5.
4. Heinzerling KG, et al. Randomized, placebo-controlled trial of bupropion in methamphetamine-dependent participants with less than daily methamphetamine use. *Addiction*. 2014; 109(11):1878–86.
5. Shoptaw S, et al. Randomized, placebo-controlled trial of bupropion for the treatment of methamphetamine dependence. *Drug Alcohol Depend*. 2008; 96(3):222–32.
6. Winhusen TM, et al. A randomized trial of concurrent smoking cessation and substance use disorder treatment in stimulant dependent smokers. *J Clin Psychiatry*. 2014; 75(4):336–43.
7. Shoptaw S, et al. Randomized, placebo-controlled trial of sertraline and contingency management for the treatment of methamphetamine dependence. *Drug Alcohol Depend*. 2006; 85(1):12–8.
8. Shearer J, et al. A double-blind, placebo-controlled trial of modafinil (200 mg/day) for methamphetamine dependence. *Addiction*. 2009; 104(2):224–33.
9. Tiihonen J, et al. A comparison of aripiprazole, methylphenidate, and placebo for amphetamine dependence. *Am J Psychiatry*. 2007; 164(1):160–2.
10. Elkashef A, et al. Topiramate for the treatment of methamphetamine addiction: a multi-center placebo-controlled trial. *Addiction*. 2012; 107(7):1297–306.
11. Azadbakht A, et al. The Effects of Oxytocin on Craving, Mental Health Parameters, and Stress Hormones in Methamphetamine-Dependent Patients Undergoing Matrix Treatment Model: A Randomized, Double-Blind Clinical Trial. *Eur Addict Res*. 2022; 28(5):340-349.

# References

12. Galloway GP, et al. A randomized, placebo-controlled trial of sustained release dextroamphetamine for treatment of methamphetamine addiction. *Clin Pharmacol Therapeutics*. 2011; 89(2):276–82.
13. Longo M, et al. Randomized controlled trial of dexamphetamine maintenance for the treatment of methamphetamine dependence. *Addiction*. 2010; 105(1):146–54.
14. Miles SW, et al. Extended-release methylphenidate for treatment of amphetamine/ methamphetamine dependence: a randomized, double blind, placebo-controlled trial. *Addiction*. 2013; 108(7):1279–86.
15. Ling W, et al. Sustained-release methylphenidate in a randomized trial of treatment of methamphetamine use disorder. *Addiction*. 2014; 109(9):1489–500.
16. Rezaei F, et al. Sustained-release methylphenidate in methamphetamine dependence treatment: a double-blind and placebo controlled trial. *Daru*. 2015;23:2.
17. Anderson AL, et al. Modafinil for the treatment of methamphetamine dependence. *Drug Alcohol Depend*. 2012; 120(1–3):135–41.
18. Heinzerling KG, et al. Randomized, double-blind, placebo-controlled trial of modafinil for the treatment of methamphetamine dependence. *Drug Alcohol Depend*. 2010; 109(1–3):20–9.
19. Jittiwutikan J, et al. Amineptine in the treatment of amphetamine withdrawal: a placebo-controlled, randomised, double-blind study. *J Med Assoc Thai*. 1997; 80(9):587–92.
20. Lee N, et al. A pilot randomised controlled trial of modafinil during acute methamphetamine withdrawal: feasibility, tolerability and clinical outcomes. *Drug Alcohol Rev*. 2013; 32(1):88–95.
21. Heinzerling KG, et al. Randomized, placebo-controlled trial of baclofen and gabapentin for the treatment of methamphetamine dependence. *Drug Alcohol Depend*. 2006; 85(3):177–84.
22. Salehi M, et al. The effect of buprenorphine on methamphetamine cravings. *J Clinical Psychopharmacol*. 2015; 35(6):724–7.
23. Ahmadi J, et al. Comparing the effect of buprenorphine and methadone in the reduction of methamphetamine craving: a randomized clinical trial. *Trials*. 2017; 18(1):259.
24. Coffin PO, et al. Extended-release naltrexone for methamphetamine dependence among men who have sex with men: a randomized placebo-controlled trial. *Addiction*. 2018; 113(2):268–78.

# References

25. Runarsdottir V, et al. Extended-release injectable naltrexone (XR-NTX) with intensive psychosocial therapy for amphetamine-dependent persons seeking treatment: a placebo controlled trial. *J Addict Med.* 2017; 11(3):197–204.
26. Tiihonen J, et al. Naltrexone implant for the treatment of polydrug dependence: a randomized controlled trial. *Am J Psychiatry.* 2012; 169(5):531–6.
27. Jayaram-Lindström N, et al. Naltrexone for the treatment of amphetamine dependence: a randomized, placebo-controlled trial. *Am J Psychiatry.* 2008; 165(11):1442–8.
28. Johnson BA, et al. A preliminary randomized, double-blind, placebo controlled study of the safety and efficacy of ondansetron in the treatment of methamphetamine dependence. *Int J Neuropsychopharmacol.* 2008; 11(1):1–14.
29. Briones M, et al. Varenicline treatment for methamphetamine dependence: a randomized, double-blind phase II clinical trial. *Drug Alcohol Depend.* 2018; 189:30–6.
30. Farahzadi MH, et al. Riluzole for treatment of men with methamphetamine dependence: a randomized, double blind, placebo-controlled clinical trial. *J Psychopharmacol.* 2019; 33(3):305–15.
31. Grant JE, et al. A double-blind, placebo controlled study of N-acetyl cysteine plus naltrexone for methamphetamine dependence. *Eur Neuropsychopharmacol.* 2010; 20(11):823–8.
32. McKetin R, et al. N-acetylcysteine (NAC) for methamphetamine dependence: A randomised controlled trial. *EClinicalMedicine.* 2021 Jul 13;38:101005.
33. Ling W, et al. Double-blind placebo-controlled evaluation of the PROMETA protocol for methamphetamine dependence. *Addiction.* 2012; 107(2):361–9.
34. Urschel HC 3rd, et al. A controlled trial of flumazenil and gabapentin for initial treatment of methylamphetamine dependence. *J Psychopharmacol.* 2011; 25(2):254–62.
35. Fayaz Feyzi Y, et al. Synergistic effect of combined transcranial direct current stimulation and Matrix Model on the reduction of methamphetamine craving and improvement of cognitive functioning: a randomized sham-controlled study. *Am J Drug Alcohol Abuse.* 2022 May 4;48(3):311-320.
36. Xu X, et al. The transcranial direct current stimulation over prefrontal cortex combined with the cognitive training reduced the cue-induced craving in female individuals with methamphetamine use disorder: A randomized controlled trial. *J Psychiatr Res.* 2021 Feb;134:102-110.
37. Srisurapanont M, et al. Efficacy and dropout rates of antipsychotic medications for methamphetamine psychosis: A systematic review and network meta-analysis. *Drug Alcohol Depend.* 2021 Feb 1;219:108467.





# Application of Knowledge and Cases

---

# Case 1

46 yo PMH of sedative use disorder, opioid use disorder severe in early remission, stimulant use disorder severe who is brought today due to recent relapse on Xanax bars about 4 bars possibly 2mg each per day last use today about 2 hours ago; also use of methamphetamines inhaled and smoked 30 mins ago. Now starting to behave in erratic fashion, endorsing anxiety, having auditory hallucinations, paranoia, and irritability which were reasons brought in for evaluation.

- On initial assessment patient endorses mistrust from evaluator, thinks that she is at her aunt's house and questions my presence, is difficult to be redirected.
- There is no history of bipolar disorder, schizophrenia, there is history of psychosis only when under the influence per relative.
- There is history of GAD, PTSD for which patient takes clonazepam, no records found on PDMP.

# Exam

- BP: 178/104 HR 108 RR: 22 T: 97.4
- Neurologic: Grossly intact, non-focal
- Behavior: irritable, anxious
- Speech: fast rate and rhythm normal volume
- Language: intact; no abnormalities noted
- Mood: anxious; sleep is generally poor, has not slept for the past 3 days
- Affect: full range and congruent with mood
- Thought process: circumpheral and not goal-directed
- Thought content: Paranoia
- Orientation: alert and oriented to person and time
- Concentration and Attention: decreased attention span as there is inability to appropriately attend and answer questions throughout interview
- Intellect/Fund of Knowledge: average as evidenced by use of language and vocabulary
- Insight: poor as evidenced by lack understanding of symptoms
- Judgment: poor as evidenced by engagement in treatment

# Management

- What would initial management be for this patient in the following settings:
  - - Hospital
  - - Residential level of care 3.5-3.7
  - - Outpatient Clinic
- What options are there to utilize?
  - - Benzodiazepines?
  - - Second generation antipsychotics?
  - - How about the blood pressure and heart rate?





# After a few days

- Patient underwent safe taper to withdraw benzodiazepines
- Patient is endorsing hypoactivity and anhedonia now endorses that is craving methamphetamines.
- After explaining benefits and risks is decided to be started with off label use of Bupropion and Long Acting Naltrexone
- What diagnoses are these medications approved for?
- How can we obtain these medications for our patients?
- How does coordination to receive Vivitrol occurs





Are there any other options pursuing off label use of these medications

- Can I get approval every 3 weeks?
  - What do I do if I can't get Vivitrol, would oral Naltrexone work?
  - Can I supplement that 4<sup>th</sup> week with oral Naltrexone
  - My patient is having insomnia due to the Extended Release Bupropion, can I use Sustained Release or Immediate Release?
  - How frequently is it required to perform liver function tests?
- 
- 
- 
- 





# Case #2

- 42 yo patient PMH of cannabis use disorder moderate, stimulant use, tobacco use ½ ppd, hypertension comes today because use of methamphetamines has progressed. Now injecting daily and smoking daily about 1 gram of meth, which has led to financial problems, admissions to the hospital due to infections, and anxiety as life is “spiraling down.”
  - *“I can’t sleep, I keep on thinking how to reduce my use but I can’t, and I want to be clear with you doc, I do not want to stop because I know that if I use only a couple of times per week I will enjoy it again.”*
- Also reports concerns about heart beating fast, even when not using. Blood pressure has risen even while on medication. Not smoking tobacco. Denied other substances.

Height: 5’4”, Weight 115 lbs, BMI 19.7

Vitals: BP: 142/87 HR: 88 RR: 16 T: 96.8

# Therapeutic options and questions to ask ourselves

- - Patient opted to trial mirtazapine
- - Are there areas to explore in primary care for this patient population?
  - [ASCVD Risk Estimator + \(acc.org\)](#)
  - Cholesterol 154 HDL: 45 LDL 78
- - Aspirin?
- - Statins?
- - ACEI, ARB?
- - Echocardiogram?