



**Train at the Top-Ranked  
Health System  
in California**

*Welcome to UCLA!*

**UCLA**

David Geffen School of Medicine

# *Graduate Medical Education*

## **Outstanding Clinical Training**

- 4 Clinical Range
- 5 Wide-Reaching Health System
- 8 Leading Research
- 9 Outstanding Mentors
- 12 Collaborative Campus

## **Join a Supportive Community**

- 13 Delivering Acts of Kindness
- 14 Justice, Equity, Diversity, and Inclusion
- 15 Los Angeles

## **See Yourself Here**

- 16 We Take Care of You
- 17 We Look Forward To Meeting You!

UCLA's world-class hospitals, extensive training sites, and enriching patient experiences prepare trainees to live a life of impact.

*Our mission is to deliver leading-edge patient care, research, and education.*



**99 ACGME-**  
accredited specialty  
and subspecialty  
programs



**1,300**  
post-graduate  
training positions



**Diverse training sites**  
across Los Angeles

## OUTSTANDING CLINICAL TRAINING

*Hone your practice while making a difference*

# Clinical Range

Trainees benefit from a spectrum of complex care experiences.

▶ [Hear from our trainees](#)



## OUTSTANDING CLINICAL TRAINING

*Hone your practice while making a difference*

# Wide-Reaching Health System

Los Angeles provides varied clinical-care opportunities that prepare trainees for practically any future challenge.



Ronald Reagan  
UCLA Medical  
Center



Santa Monica/  
UCLA Medical  
Center and  
Orthopaedic  
Hospital



Stewart and  
Lynda Resnick  
Neuropsychiatric  
Hospital at UCLA



West Los Angeles  
VA Medical  
Center



UCLA Medical  
Group

## OUTSTANDING CLINICAL TRAINING

*Hone your practice while making a difference*

*“I chose UCLA because you get to do a little bit of everything. I spent time with patients who very well might have donated the building that you happened to be working in, all the way to patients who this is the first time they’ve seen a doctor in 30 years – and everything in between.”*

- Dr. Chase Richard  
PGY2, UCLA Emergency Medicine



## OUTSTANDING CLINICAL TRAINING

*Hone your practice while making a difference*

# State-of-the-Art Training Facilities

Advanced training facilities create a rich environment for mastering clinical techniques and procedural knowledge.

### UCLA Simulation Center

▶ [Take a Look](#)

### Center for Advanced Surgical and Interventional Technology (CASIT)

▶ [Take a Look](#)

» *A da Vinci robotic surgery system and a human patient simulator*



## GROWTH AND DISCOVERY

*Realize your potential*

# Leading Research

Pursue basic science, clinical, and health services research with national leaders.

*“The research that they are doing here is really stuff that they aren’t doing anywhere else. So it’s really exciting to be working with these people so directly who are doing such exciting new things.”*

- Dr. Meghan Jardon  
Resident, UCLA Diagnostic Radiology



Clinical research



Basic science research



Health services research



\$581 million in NIH-funded research grants



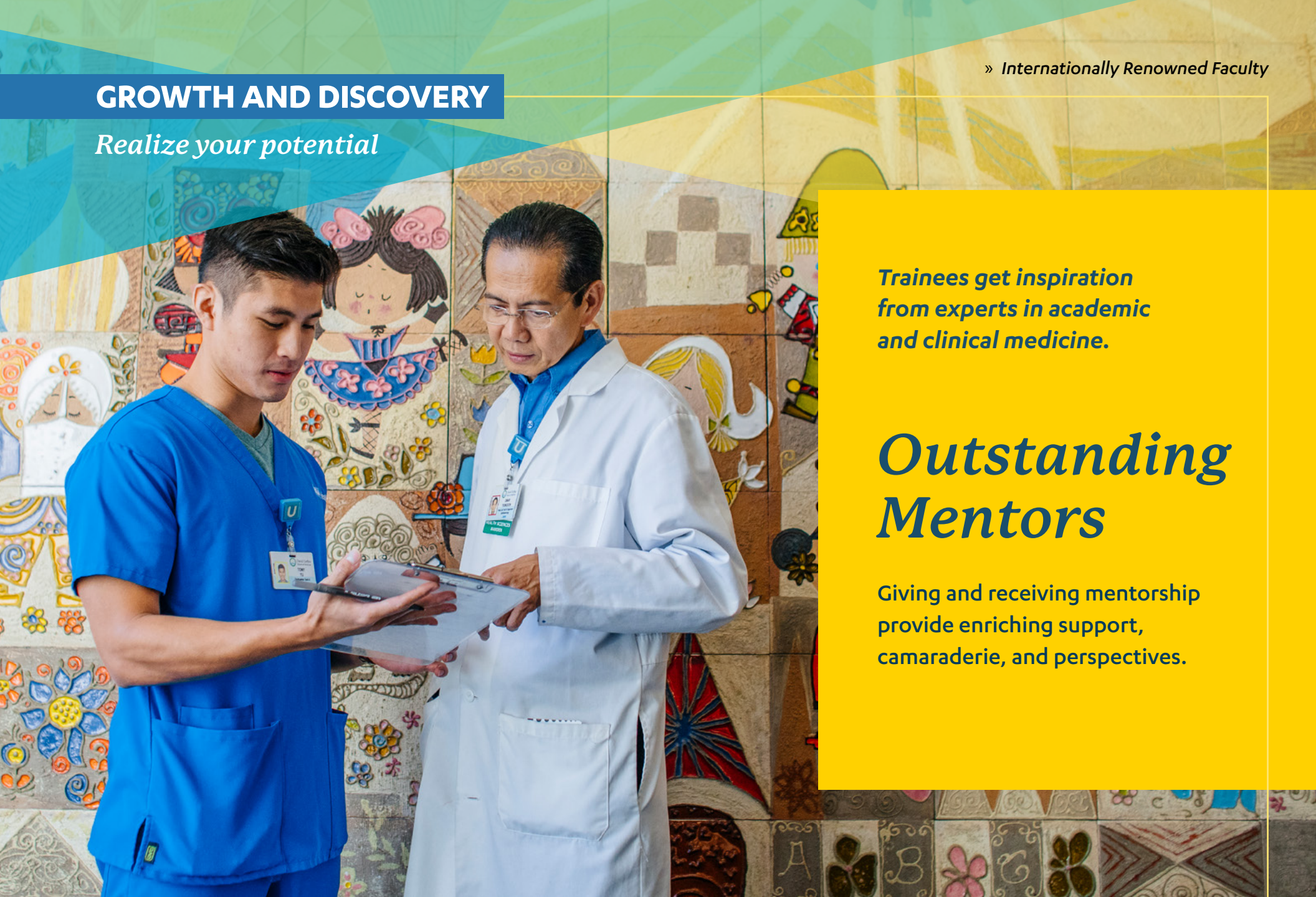
## **GROWTH AND DISCOVERY**

*Realize your potential*

*Trainees get inspiration from experts in academic and clinical medicine.*

## ***Outstanding Mentors***

*Giving and receiving mentorship provide enriching support, camaraderie, and perspectives.*



## GROWTH AND DISCOVERY

*Realize your potential*

*“I am proud to work with so many committed colleagues, students, and residents at UCLA who foreground health justice in everything they do.”*

- Helena Hansen, MD, PhD

Chair, Research Theme in Translational  
Social Science and Health Equity



## GROWTH AND DISCOVERY

*Realize your potential*



# *Physician-Scientist Pathway*

## STAR Program

Advance your physician-scientist training by pursuing a PhD at UCLA, Caltech, or RAND simultaneously with clinical specialty training at UCLA.

► [More about the STAR program](#)

## GROWTH AND DISCOVERY

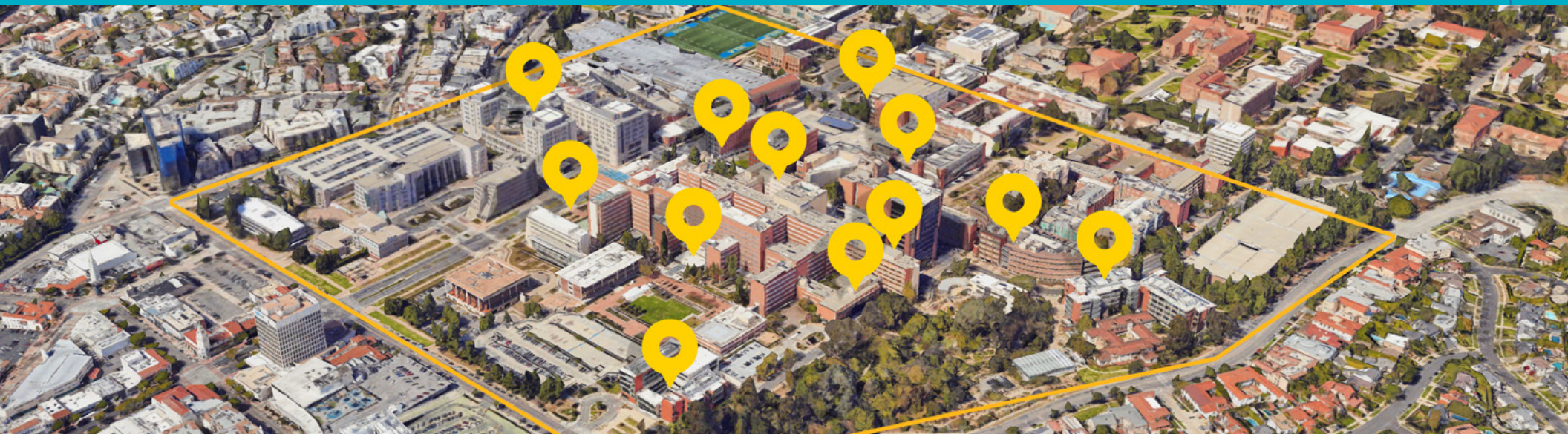
*Realize your potential*

# Collaborative Campus

Our compact campus is home to leading experts in public health, engineering, computation, genetics, and other fields. Collaborations and life-changing conversations are just a short walk away.

In just 5 minutes, our trainees can walk to:

- Fielding School of Public Health
- UCLA School of Nursing
- UCLA School of Dentistry
- Terasaki Life Sciences Building
- California Nanosystems Institute
- Biomedical Sciences Research Building
- Henry Samueli School of Engineering
- Neuroscience Research Building
- Department of Human Genetics
- Department of Computational Medicine



**JOIN A SUPPORTIVE COMMUNITY**

# *Delivering Acts of Kindness*

We're united by shared values.



**Community**



**Inclusion**



**Advocacy**

**JOIN A SUPPORTIVE COMMUNITY**

# *Justice, Equity, Diversity, and Inclusion*

Training the physicians of today for a more equitable tomorrow.

▶ [Hear from our trainees](#)

*“We are privileged to live out our mission of excellence through diversity and advance justice through health equity at UCLA.”*

- Lovelee E. Brown, MD  
Founder & Faculty Advisor,  
Minority House Staff Organization



JOIN A SUPPORTIVE COMMUNITY

# Los Angeles

Explore your passions and interests in the most colorful city in the world.



Outdoor  
Activities



Music



Scenery



Food



Nightlife



**SEE YOURSELF HERE**

# *We Take Care of You*

So that you can take care of your patients

▶ [See benefits and wellness](#)

Medical insurance

Dental insurance

Vision insurance

Flexible Saving Account

Behavioral wellness resources

Convenient, modern housing available at below-market rates

## **Sample Agreement**

*See a sample Resident Agreement and learn more about eligibility requirements*

▶ [Incoming Residents](#)



SEE YOURSELF HERE

# *We Look Forward To Meeting You!*

We hope you see yourself growing and thriving as part of our UCLA community. Get an even more comprehensive view of life with us by enjoying video tours, stories and interviews spotlighting the remarkable students, staff, faculty and trainees who have made us the youngest top-10 medical school in the nation.

▶ [See yourself here](#)

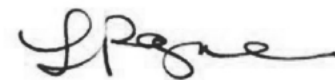
We wish you the best of luck in finding not only the perfect place to continue your post-graduate training, but also a place you can call home.

Very sincerely yours,



**Nelson SooHoo, MD**

*DIO and Associate Dean for Graduate  
Medical Education  
Professor-in-Residence Department  
of Orthopaedic Surgery*



**Lisa L. Payne**

*Director, Graduate Medical Education*

