

UCLA Stein Eye Institute

Highlights

July 1, 2022–June 30, 2023



UCLA Stein Eye Institute | **DOHENY**
EYE INSTITUTE





July 1, 2022–June 30, 2023

It has been a year of change.

It has been a year of growth.

It has been a year of celebration.

It has been another exceptional year at the UCLA Stein Eye Institute.

Please join me as we highlight this year of achievement:

- ▶ We marked the 10th anniversary of our historic partnership with the Doheny Eye Institute.
- ▶ Stein and Doheny vision scientists received 97 R01 and other major competitive vision-science research grants totaling \$16,548,547 in support of innovative investigations.
- ▶ Our researchers are transcending traditional disciplinary boundaries and conducting multidisciplinary investigations that are uncovering evidence with potential to transform diagnosis and treatment paradigms for blinding eye diseases.
- ▶ Our clinicians are leading the way in state-of-the-art care, and our faculty have been globally lauded for their excellence.
- ▶ The UCLA Stein Eye and Doheny Eye Institutes continue to be ranked among the finest in the nation, a distinction the Stein Eye Institute has held since *U.S. News and World Report* “Best Hospitals” rankings began in 1989.
- ▶ The UCLA Mobile Eye Clinic (UMEC) continues to improve lives by providing free vision care to students and the medically underserved in Los Angeles County and beyond, serving more than 300,000 patients since UMEC was established in 1975.
- ▶ Through our program of justice, equity, diversity, and inclusion, we are broadening our ranks and creating a deeper connection to our patient base and community while also strengthening the Institute.
- ▶ With the generous financial support from our donors and friends, we are making significant progress in ophthalmology to the benefit of patients worldwide.

I hope you enjoy these highlights of our 2022–23 academic year, which serve to support our shared goal of preserving and restoring vision.

A handwritten signature in black ink that reads "Anne L. Coleman MD, PhD". The signature is fluid and cursive.

Anne L. Coleman, MD, PhD

Bradley R. Straatsma, MD, Endowed Chair in Ophthalmology
Chair, UCLA Department of Ophthalmology
Director, Stein Eye Institute
Affiliation Chair, Doheny Eye Institute

Welcoming Our New Director and Chair: Dr. Anne Coleman

In July 2022, **Anne L. Coleman, MD, PhD**, Bradley R. Straatsma, MD, Endowed Chair in Ophthalmology, assumed leadership of the Stein Eye Institute and the UCLA Department of Ophthalmology. As director of the Institute, chair and executive medical director of the Department, and affiliation chair of the Doheny Eye Institute, Dr. Coleman brings with her a broad agenda to address the growing challenges for patient care, education, vision-science research, and community outreach.

Dr. Coleman is a glaucoma specialist as well as a passionate leader, esteemed researcher, educator, and patient advocate. She is also the director of the Stein Eye Institute Center for Community Outreach and Policy and the UCLA Mobile Eye Clinic. Committed to expanding access to quality eye care, Dr. Coleman has overseen outreach efforts to screen and treat over 180,000 medically underserved children and adults in Southern California.

A national leader in ophthalmology, Dr. Coleman has served in the highest of leadership roles, including as president of the American Academy of Ophthalmology (AAO), chair of the National Eye Institute's National Eye Health Educational Program, president of Women in Ophthalmology, president of the Council for the American Ophthalmological Society, and associate editor of the *American Journal of Ophthalmology*. In recognition of her contributions to the field, Dr. Coleman has received numerous honors, including the AAO Life Achievement Award and Secretariat Award and being elected to the National Academy of Medicine.



Our three exemplary leaders who have each served as chair of the UCLA Department of Ophthalmology and director of the Stein Eye Institute: Dr. Bartly Mondino (1994–2022), Dr. Anne Coleman (2022–present), and Dr. Bradley Straatsma (1964–1994).



Historic Affiliation Celebrates its 10th Anniversary

The UCLA Stein Eye Institute and Doheny Eye Institute celebrated ten years as proudly affiliated partners in December 2023.

The unique alliance brought together two organizations that share similar values and standards for education, patient care, and research, while preserving the distinct identity of each.



Individually both the Stein Eye and Doheny Eye Institutes have a storied history and were regarded as among the top ten institutes in the world. Now the Stein Eye and Doheny Eye Institutes are working together within a single integrated Department of Ophthalmology and have consistently been ranked by *U.S. News & World Report* as among the top five in the nation for ophthalmology. The Doheny Eye Institute is an independent, nonprofit research organization, and nearly the entire team of clinicians and researchers from DEI, formerly associated with the University of Southern California, transitioned to UCLA Department of Ophthalmology faculty in 2013.

With a complementary set of resources, the affiliation has created new opportunities for progress in a broader range of expertise and collaboration for patient care and research. Immediately upon affiliating, for example, Doheny Eye Centers UCLA locations opened in Arcadia, Orange County, and Pasadena, greatly broadening access to eye health services for our community. The Department also established a formal relationship with City of Hope in Duarte providing care and consultation for cases involving cancer and the eye. And research faculty working at the Stein and Doheny Eye Institutes with cross disciplines are collaborating on multiple projects to advance vision science.

The Doheny Eye Institute recently opened its new headquarters in Pasadena. The vision-science campus features 25,000 square feet of dedicated research space, the Doheny Image Reading Center and Analysis Laboratory, as well as a conference center to enhance academic excellence. A state-of-the-art Doheny Eye Center UCLA office, located on the Pasadena campus, will begin offering patients a full spectrum of eye health care in 2024.

Doheny Eye Institute headquarters in Pasadena





FOR OVER 40 YEARS, the UCLA Mobile Eye Clinic has been providing free eye care services and glasses for medically under-resourced communities in Los Angeles County.

WE HAVE SERVED OVER
300,000 PATIENTS

SINCE THE PROGRAM WAS ESTABLISHED IN 1975.

UCLA Mobile Eye Clinic

MAKING A DIFFERENCE IN OUR COMMUNITY

JULY 1, 2022–JUNE 30, 2023

NUMBER OF PATIENTS SCREENED/EXAMINED

4,379

ADULTS
(Community Centers or Homeless Outreach Centers)
662

PRESCHOOLS
2,853

**ELEMENTARY/
HIGH SCHOOLS**
582

HEALTH FAIRS
282

1,336

PAIRS OF EYEGLASSES DISTRIBUTED



ADULTS
(Community Centers or Homeless Outreach Centers)
700



PRESCHOOLS
431



**ELEMENTARY/
HIGH SCHOOLS**
185

HEALTH FAIRS
20

NUMBER OF HOURS PROVIDING VISION CARE TO UNDERSERVED COMMUNITIES IN SOUTHERN CALIFORNIA

2,176

Ophthalmologists/residents, medical students, and undergraduate students contributed

761

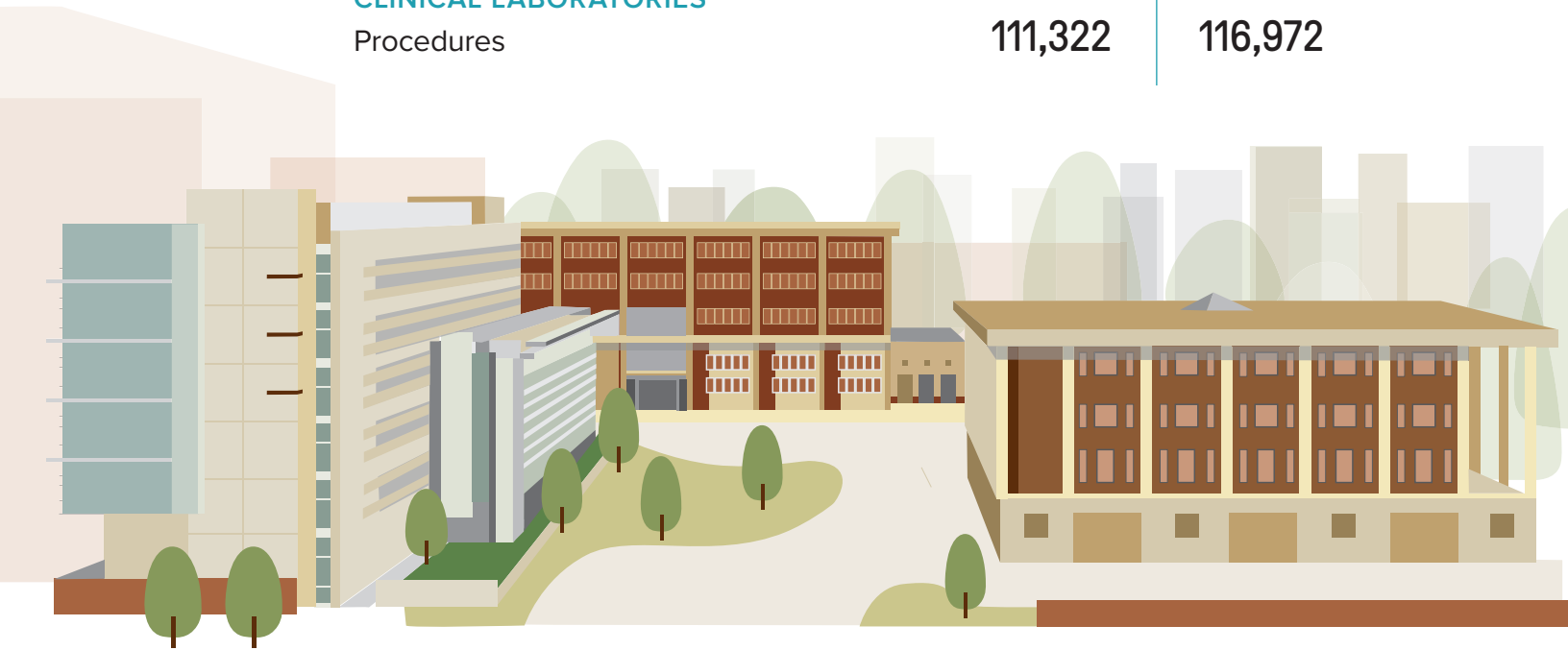
VOLUNTEER HOURS



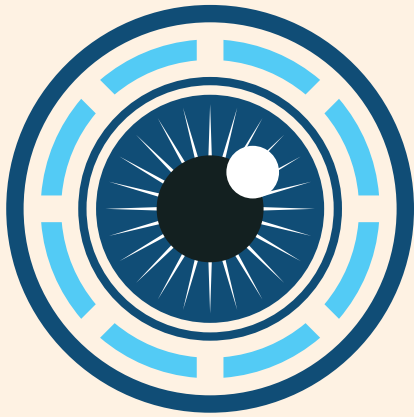
Patient Care

EXCELLENCE IS OUR FIRST PRIORITY

	2021-22	2022-23
FACULTY CONSULTATION SERVICE		
Patient visits	165,963	177,851
INPATIENT CONSULTATION SERVICE		
Patient evaluations	1,135	1,224
CLINICAL LABORATORIES		
Procedures	111,322	116,972



SURGERY SERVICES		
Number of procedures (includes laser)	25,288	25,751
Intravitreal Injections	15,433	16,172
UCLA MOBILE EYE CLINIC		
Number of patients	3,183	4,379
Ocular abnormalities	67%	18%
Number of trips	209	305



BENCH-TO-BEDSIDE harmony of clinical studies being investigated in collaboration with laboratory-based research has driven the Institute's research mission since our inception, creating a spectrum of discovery in specialties across ophthalmology.

Research

JULY 1, 2022–JUNE 30, 2023

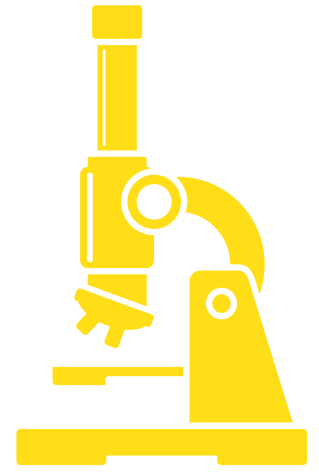
**VISION-SCIENCE RESEARCH
ACTIVE FUNDING**
Administered by **DOHENY EYE INSTITUTE**

18 TOTAL NUMBER OF
**VISION-SCIENCE RESEARCH
GRANTS**

\$2,660,528 **NIH/NEI**

\$222,048 **OTHER**

\$2,882,576 **TOTAL DOLLARS**



**CLINICAL RESEARCH
ACTIVE FUNDING**
Administered by **UCLA**

67 TOTAL NUMBER OF
**CLINICAL RESEARCH
GRANTS**

\$4,097,200 **TOTAL DOLLARS**

**VISION-SCIENCE RESEARCH
ACTIVE FUNDING**
Administered by **STEIN EYE INSTITUTE**

79 TOTAL NUMBER OF
**VISION-SCIENCE RESEARCH
GRANTS**

\$9,396,483 **NIH/NEI**

\$4,269,488 **OTHER**

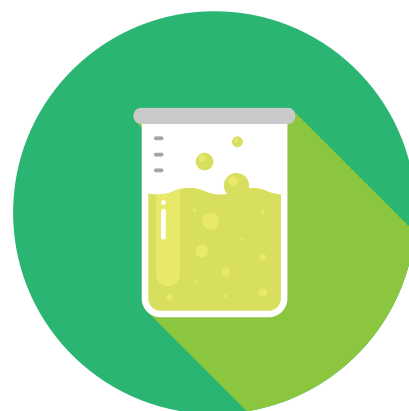
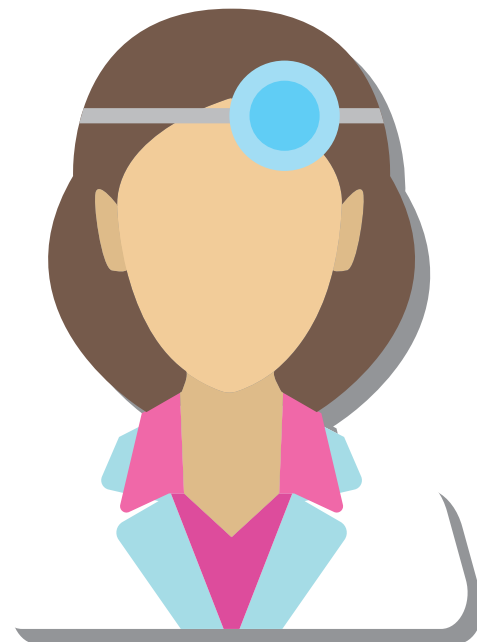
\$13,665,971 **TOTAL DOLLARS**

35

CLINICAL TRIALS

16 Clinical Trials Recruiting

19 Clinical Trials NOT Recruiting



72

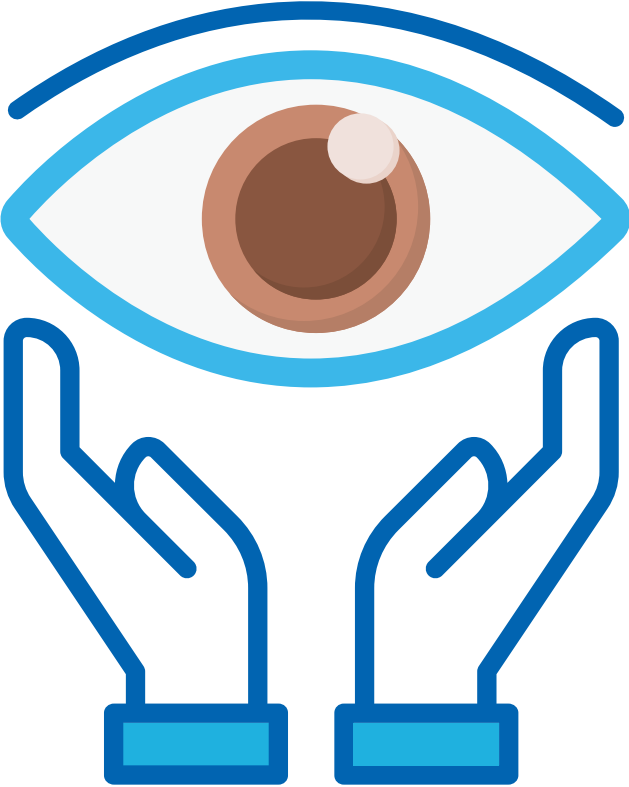
CLINICAL STUDIES



262

PUBLICATIONS

Philanthropy

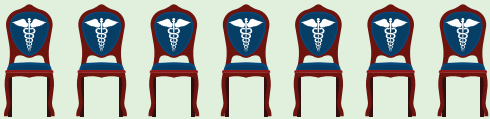


For more than 50 years, the UCLA Stein Eye Institute has been unwavering in its commitment to find innovative ways to prevent blindness and preserve vision. Equally dedicated to our mission are our donors, who have generously provided philanthropic support that has paved the way for breakthroughs in research, clinical care, physician education, and community outreach. Our shared purpose has led to milestones that have transformed the way we diagnose and treat eye diseases—and we are only just beginning. As we continue to pursue excellence, your philanthropy is a source of inspiration and hope.

Receiving an endowed chair is the highest accolade for faculty—a tradition dating back to Sir Isaac Newton. It demonstrates UCLA’s utmost respect for their thought leadership and entails financial support to the chair holder. Endowed chairs provide extra incentive to recruit and retain top faculty and are vital to the Department of Ophthalmology’s continued preeminence.

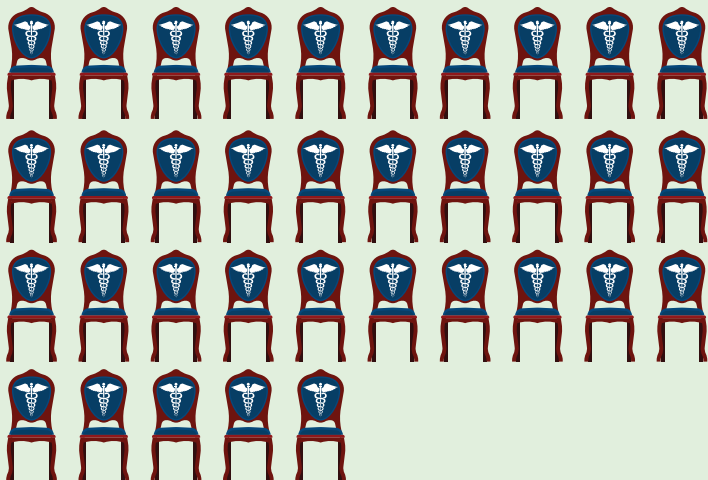
Number of Endowed Chairs
SUPPORTING
Doheny Eye Faculty

7








Number of Endowed Chairs
SUPPORTING
Stein Eye Faculty

35



Giving Amounts by Record Type Primary Donors—No Grants



	Planned Gift	\$19,293,749
	Gift	\$7,768,474
	Pledge Payment	\$114,500
	Recurring Gift/Recurring Payment	\$2,250
	Matching Gift	\$1,342



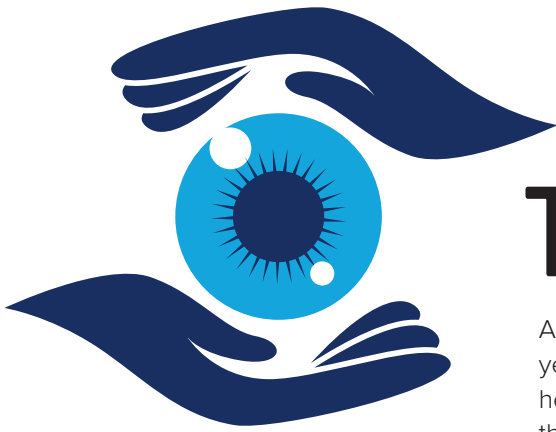
24

NUMBER OF STEIN EYE INSTITUTE
FELLOWSHIP FUNDS AND ENDOWMENTS

58

NUMBER OF STEIN EYE INSTITUTE **ENDOWMENTS** FOR:
**RESEARCH,
EDUCATION
AND
PATIENT CARE**





Thank You

As our esteemed team at UCLA Stein Eye Institute looks back over the past year, we are grateful for our committed philanthropic partners who have helped us break new ground in research, enhance patient care, educate the next generation of eye specialists, and expand our community engagement. Your support has been instrumental in our efforts to prevent blindness and preserve vision. So many of our accomplishments are because of these valuable partnerships with our donors who give so generously to our work. Thank you for joining us in our shared purpose.

Donations July 1, 2022–June 30, 2023

Major Gifts \$25,000 and Above:

Anonymous
BrightFocus Foundation
Bruce Ford and Anne Smith Bundy Foundation
Carol and Timothy W. Hannemann
Dr. James D. Shuler and Mrs. Catherine R. Shuler
Estate of Vincent E. Scully
Esther A. and Joseph Klingenstein Fund
Heidelberg Engineering, Inc
Hongbin Peng
J. Bronwyn Bateman, MD
Jack & Charlotte Lavery Fund
Joan A. Payden
Karen and Franklin Dabby
Kay K. Pick Trust
Kelvin and Hana Davis
Knights Templar Eye Foundation, Inc.
Kuen Lau Research Foundation
Leidenfrost Trust
Research to Prevent Blindness, Inc.
Richard B. Shapiro
Robert Goldberg and Jan Takasugi Family Foundation Fund
Robert L. Fox and Valerie J. Fox Revocable Trust

Shirley and Ralph Shapiro
The Simms/Mann Family Foundation
The William & Margaret Fern Holmes Family Foundation
VHL Alliance
Wilbur May Foundation

Individuals Recognized with a Tribute Gift

IN HONOR OF:

Allan E. Kreiger, MD
Andre Giraldo
Anne L. Coleman, MD, PhD
Anne Papush
Bartly J. Mondino, MD
Batool Jafri, MD
Bradley R. Straatsma, MD, JD
Fred C. Askari
Gary N. Holland, MD
Jennie Kageyama, OD
Jodi L. Milstein
Joseph Caprioli, MD
Joseph L. Demer, MD, PhD
Kevin M. Miller, MD
Robert A. Goldberg, MD
Robert D. Yee, MD
Robert S. Hepler, MD

Samuel D. Hobbs, MD
Shawn R. Lin, MD
Simon K. Law, MD, PharmD
Stacy L. Pineles, MD
Steven D. Schwartz, MD
Tara A. McCannel, MD, PhD
Vikas Chopra, MD

IN MEMORY OF:

Alice E. Taylor
Arlene J. Vida
Bruce K. Kawaguchi, DDS
Charles G. Cullen, MD
David Shultz
Donald R. Heikes
Genevene Vogel
Harlan Huebner
Howard D. Felsher
Jerrold C. Bocci, MD
Joan Huebner
Jule Lamm, OD
Katherine L. Gray
Kimberly Eremic
Phyllis R. Rothstein
Roger P. Gray
Stanley K. Rothstein
Victor Roth

Justice, Equity, Diversity, Inclusion



MORE THAN
\$660,000

IN EXTERNAL FUNDING
secured to advance disparity
research and EyeJEDI training
in 2022.

EyeJEDI Programs

Justice, Equity, Diversity, and Inclusion are central to the fulfillment of the Stein Eye Institute's mission. The EyeJEDI Committee of the UCLA Department of Ophthalmology is advancing initiatives that are creating a more diverse and inclusive Department and ensuring that all patients have access to the highest quality eye care. Programs include:

- ▶ Building a pipeline to eliminate health disparities in ophthalmology.
 - ▶ Incorporating a holistic ophthalmology residency selection process.
 - ▶ Providing scholarships that support an elective rotation or summer research for visiting medical students and undergraduate students who have demonstrated a commitment to reducing health disparities in ophthalmology.
- ▶ Creating an inclusive and nurturing environment for all trainees and junior faculty to grow.
- ▶ Increasing representation in Departmental leadership.
- ▶ Developing a structured curriculum to educate trainees, faculty, and staff on topics related to justice, equity, diversity, and inclusion.
- ▶ Expanding research on gender, race, and ethnicity disparities in eye care and ophthalmology training.
- ▶ Continuing eye health engagement and outreach activities for underserved members of our community.
- ▶ Using technology to further improve eye care delivery to non-English-speaking patients.



Awards and Honors

AAO 2022 Award Recipients

The Stein Eye and Doheny Eye Institutes contributed more than 100 lectures, presentations, and exhibits at the November 2022 American Academy of Ophthalmology (AAO) Annual Meeting in Chicago, Illinois.

In addition to their educational contributions, faculty from Stein and Doheny were honored for their service to ophthalmology:

Gary N. Holland, MD, received the AAO Distinguished Service Award for his ongoing notable service to ophthalmology and the Academy.

Vikas Chopra, MD, and **John A. Irvine, MD**, received the AAO Senior Achievement Award for their longtime contributions to the scientific and educational programs of the Academy, and to the field of ophthalmology.

Simon Fung, MD, MA, and **Edmund Tsui, MD**, each received the AAO Achievement Award for their contributions to the Academy, its scientific and educational programs, and to the field of ophthalmology.

Kevin M. Miller, MD, **Peter A. Quiros, MD**, and **Edmund Tsui, MD**, received the Secretariat Award for their exceptional service to the Academy.

Grants

Stein and Doheny Vision Scientists Receive Major Grant Funding

Creating new knowledge is foundational to our quest to protect vision and end blindness, and large grants help to propel that journey. Researchers from the Stein Eye and Doheny Eye Institutes are proud recipients of National Institutes of Health Research Project Grants, known as R01 grants, and other major competitive grants supporting innovative research. Congratulations to these grant recipients:

Deborah Ferrington, PhD, chief scientific officer at the Doheny Eye Institute, received an R01 four-year grant supporting her study, Mitochondrial Defects in the Retinal Pigment Epithelium and the CFH Risk Allele for Age Related Macular Degeneration.

SriniVas R. Sadda, MD, professor of ophthalmology, was awarded an R01 five-year grant for his study, Epidemiology of Biomarkers of AMD Progression, which includes three subawards to Case Western Research University, University of Pennsylvania, and University of Miami.

Xian-Jie Yang, PhD, professor of ophthalmology, received a \$1.3 million California Institute for Regenerative Medicine (CIRM) Quest Award to support her work developing a gene therapy for dominant optic atrophy, an inherited optic nerve disease caused by mutations in the OPA1 gene.

Yuhua Zhang, PhD, associate professor of ophthalmology, received a four-year, R01 grant to support his study, In Vivo Characterizations of Retinal Hemodynamics.

RPB

Research to Prevent Blindness Awardees

Research to Prevent Blindness (RPB), a nonprofit organization created in 1960 by Dr. Jules Stein, supports research to develop treatments, preventives, and cures for all conditions that damage and destroy sight. We celebrate the following RPB awardees:

Kaustabh Ghosh, PhD, associate professor of ophthalmology, received the RPB/International Retinal Research Foundation Catalyst Award for Innovative Research Approaches for Age-Related Macular Degeneration.

Victoria L. Tseng, MD, PhD, assistant professor of ophthalmology, received the RPB Career Development Award.

Megan Paul, a medical student working at the UCLA Stein Eye Institute, received the RPB Medical Student Eye Research Fellowship.

UCLA Department of Ophthalmology received an Unrestricted Grant from RPB, which supports flexibility in developing and expanding eye research programs.

UCLA Excellence in Postdoctoral Mentoring Award Honorees

Sophie X. Deng, MD, PhD, Roxana Radu, MD, and David S. Williams, PhD, were recipients of 2022 Postdoctoral Scholars Mentor Awards, which honor UCLA faculty members who provide outstanding mentorship while also helping postdoctoral scholars develop successful careers.

Faculty Honors

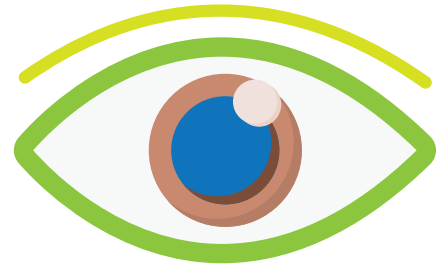
Anthony J. Aldave, MD, Walton Li Chair in Cornea and Uveitis, received the R. Townley Paton Award and presented the Paton Lecture, The Science of Sight: Addressing Corneal Blindness in the Developing World, September 30, 2022, at the Cornea and Eye Banking Forum, in Chicago, Illinois. The Paton award is the Eye Bank Association of America's highest honor for corneal physicians.

Dr. Aldave also received the Asia Cornea Foundation (ACF) Medal and gave the ACF Medal Lecture at the Asia Cornea Society biannual meeting on November 24, 2022, in Bangkok, Thailand.

Anthony C. Arnold, MD, Mary Oakley Foundation Chair in Neurodegenerative Diseases, presented the keynote lecture, Nonarteritic Anterior Ischemic Optic Neuropathy 2022: A Limited Discussion, at the 11th Asian Neuro-Ophthalmology Society Meeting in Bangkok, Thailand, on November 23, 2022.

Laura Bonelli, MD, health sciences assistant clinical professor of ophthalmology, received the Olive and Anga Lundgren Endowed Chair in Ophthalmology.

Joseph Caprioli, MD, David May II Chair in Ophthalmology, was honored with the S. Rodman Irvine Prize for his professional excellence at the UCLA Department of Ophthalmology Annual Seminar on June 2, 2023.



Anne L. Coleman, MD, PhD, chair of the UCLA Department of Ophthalmology, director of the Stein Eye Institute, and affiliation chair of the Doheny Eye Institute, received the President's Award at the American Glaucoma Society (AGS) annual meeting on March 3, 2023, in recognition of "significant contributions to the glaucoma community through scientific achievements, service to the Society, and/or service to the profession as a whole."

Dr. Coleman was also appointed Bradley R. Straatsma, MD, Endowed Chair in Ophthalmology, effective July 1, 2022, the date she assumed the position of Department chair and Institute director.

Joseph L. Demer, MD, PhD, Arthur L. Rosenbaum, MD, Chair in Pediatric Ophthalmology, presented the keynote lecture, Nexus of Strabismus, Myopia, and Glaucoma, at the Korean Association of Strabismus and Amblyopia meeting on October 29, 2022, in Seoul, South Korea.

Dr. Demer presented the same keynote lecture at the LV Prasad Eye Institute in Hyderabad, India, on December 3, 2022 (virtual).

Marissa Goldberg, chief executive officer of the Doheny Eye Institute, was named Nonprofit Executive of the Year by the *Los Angeles Business Journal* at the 2023 Nonprofit & Corporate Citizenship Awards ceremony on April 19, 2023, in Los Angeles, CA. Ms. Goldberg was honored for "making an indelible mark in vision care, and in affiliation with UCLA's Stein Eye Institute, helping lead Doheny's mission to further the conservation, improvement, and restoration of human eyesight."

Lynn K. Gordon, MD, PhD, professor of ophthalmology emeritus, and her colleague Eve J. Higginbotham, MD, were selected by the Association of University Professors of Ophthalmology (AUPO) Board of Trustees to make recommendations on how the AUPO may best achieve equity, diversity, and inclusion (EDI) goals. Dr. Gordon was the first senior associate dean of EDI at UCLA's David Geffen School of Medicine.

Stacy L. Pineles, MD, Jerome and Joan Snyder Chair in ophthalmology, was named the chair-elect of the Pediatric Eye Disease Investigator Group (PEDIG). Dr. Pineles will serve as chair from 2024 to 2029. Sponsored by the National Eye Institute, the PEDIG network carries out large national research studies in pediatric ophthalmology.

Dr. Pineles also received the Burton Kushner, MD, Medal and presented the Burton Kushner Lecture, "Functional and systemic effects of strabismus and serous pediatric eye disease" on February 4, 2023 (remote).

Peter A. Quiros, MD, health sciences clinical professor of ophthalmology, was voted president-elect of the North-American Neuro-Ophthalmology Society in July 2022. Dr. Quiros will be president-elect for two years and president of the society from 2024 to 2026.

Roxana A. Radu, MD, assistant professor of ophthalmology, received the Vernon O. Underwood Family Chair in Ophthalmology. The Chair's purpose is to help advance knowledge in vision science so as to gain understanding of the processes that cause blindness and to develop more effective ways to prevent, diagnose, and treat eye disease.

Kelsey A. Roelofs, MD, assistant professor of ophthalmology, was selected as the inaugural Dr. Allen and Charlotte Ginsburg Fellow in Precision Genomic Medicine from the UCLA Institute for Precision Health.

SriniVas R. Sadda, MD, professor of ophthalmology, was announced as president-elect of the Association for Research in Vision and Ophthalmology for 2024–25.

Alfredo A. Sadun, MD, PhD, Flora L. Thornton Endowed Chair in Vision Research, presented the neuro-ophthalmology keynote lecture, Mitochondrial Optic Neuropathies, at the European Vision and Eye Research (EVER) Meeting in Valencia, Spain, on October 14, 2022.

Dr. Sadun also presented the keynote address, "The anatomical forces underlying the pathology of LHON" on June 16, 2023, at the EUROMIT meeting in Bologna, Italy.

Victoria L. Tseng, MD, PhD, assistant professor of ophthalmology, received the Research to Prevent Blindness and American Academy of Ophthalmology Award for IRIS Registry Research. Dr. Tseng's research will focus on neovascular glaucoma and racial/ethnic disparities in the incidence, treatment patterns, and visual outcomes in patients with neovascular glaucoma.

Edmund Tsui, MD, assistant professor of ophthalmology, received the Faculty Career Development Award. His research will focus on imaging biomarkers of intraocular inflammation in children.

Dr. Tsui also received a two-year National Eye Institute R21 grant titled, "Objective quantification of vitreous inflammation using optical coherence tomography." **SriniVas Sadda, MD**, will be contributing to the grant as a co-investigator.

Irena Tsui, MD, associate professor of ophthalmology, was accepted to the Alliance for Eye and Vision Research (AEVR) Emerging Vision Scientist Program. The early stage investigators exhibit results of their cutting-edge research and then advocate for research funding with Congressional delegations.

Federico G. Velez, MD, Leonard Apt Endowed Chair in Pediatric Ophthalmology, was the Keynote Speaker in November 2022 at the University of São Paulo, Brazil; Argentinian Society of Pediatric Ophthalmology 50th anniversary, in Mendoza, Argentina; Argentinian Council of Strabismus, in Mendoza, Argentina; and LV Prasad Eye Institute 25th anniversary, in Hyderabad, India.

Dr. Velez was also the Arthur Jampolsky Day Keynote Lecturer at the California Pacific Medical Center–Pacific Vision Foundation on March 6, 2023, in San Francisco, CA, and the Pediatric Ophthalmology and Strabismus Keynote Speaker at the Oregon Academy of Ophthalmology on March 10–11, 2023, in Portland, OR.

David S. Williams, PhD, Karl Kirchgessner Foundation Chair in Vision Science, was presented with the 2022 Balazs Prize for eye research by the International Society for Eye Research (ISER) at the ISER biennial conference in Queensland, Australia, in February 2023. The international prize honors a distinguished scientist whose outstanding contributions provide significant progress in the field of experimental eye research.

Faculty
Honors

Institute News

5 NEW FACULTY APPOINTMENTS

NEW LEADERSHIP TEAM EXPANDS GOVERNANCE AND OVERSIGHT

Anne L. Coleman, MD, PhD
Director, UCLA Stein Eye Institute

Anthony J. Aldave, MD, Vice Chair of Academics

Anthony C. Arnold, MD, Vice Chair of Education

Joseph Caprioli, MD, Vice Chair of Quality

Sophie X. Deng, MD, PhD, Vice Chair of Justice, Equity, Diversity, and Inclusion

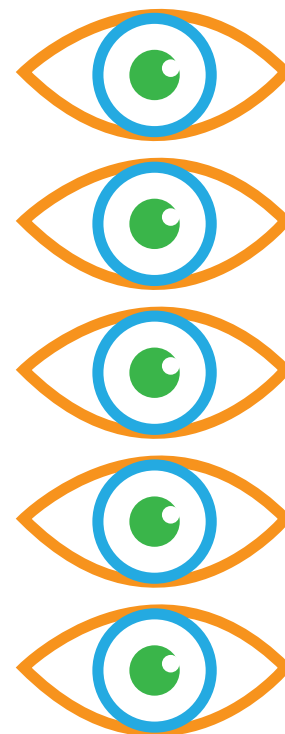
Trashon L. Fearington, Chief Administrative Officer

JoAnn A. Giaconi, MD, Vice Chair of Affiliated Hospitals

Gary N. Holland, MD, Vice Chair of Patient-Based Research

Alfredo Sadun, MD, PhD, Vice Chair of Doheny Eye Centers
UCLA

Alapakkam P. Sampath, PhD, Associate Director of Research



Trashon Fearington Named Chief Administrative Officer

Trashon L. Fearington was announced as the UCLA Department of Ophthalmology's new chief administrative officer (CAO) in March 2023 in recognition of her excellent qualifications and history of leadership and success.

Experienced in staff and physician human resources and benefits management, clinical practice improvement, and finance, coupled with training and development experience from a corporate multi-site hospital system, Trashon was hired by **Dr. Bartly J. Mondino**, former chair, and **Jonathan Smith**, former CAO, in 2009 to serve as director of staff and academic personnel.

Since joining the Department, Trashon has administered the academic and staff personnel and payroll functions for the Department. Following the affiliation agreement with the Doheny Eye Institute in December 2013, Trashon negotiated faculty contracts, spearheaded staff hires, and planned and implemented patient care practices to ensure functions met the daily needs of each service area.

Trashon was elevated to interim associate administrator in February 2020. In addition to her daily duties, she assisted the CAO and clinical director with administrative, financial,

and operational activities. During the COVID-19 pandemic, Trashon was a key member of the Department's COVID-19 Task Force, which was instrumental in disseminating guidelines, developments, and protocols related to mitigating the spread of the virus.

Trashon became interim CAO and clinical director in 2021 and has become an invaluable asset who is respected for her wisdom, people skills, and intimate knowledge of the clinical planning and strategic priorities and objectives of the David Geffen School of Medicine, UCLA Health, and the Department. We look forward to watching the Department continue to flourish under Trashon's proven leadership.



OUR EDUCATIONAL EVENTS PROVIDE ONGOING TRAINING FOR RESIDENTS, FELLOWS, AND OPHTHALMOLOGISTS WORLDWIDE.



Education

COURSES TAUGHT 2022-23

- ▶ 26th UCLA Stein Eye and Doheny Eye Institutes Vision Science Conference
- ▶ Aesthetic Eyelid and Facial Rejuvenation Course
- ▶ Annual Comprehensive Ophthalmology Review Course
- ▶ 52nd Doheny Eye Institute Annual CME Conference
- ▶ 13th Conference of the Doheny Eye Institute Ryan Initiative for Macular Research
- ▶ International Retinal Imaging Society (IntRIS) Symposium
- ▶ Alcon Vision Advanced Cataract Surgery Course



The 2023 resident graduating class received the full gamut of ophthalmic and vision-science education, and cared for a large patient population with an array of eye issues.



Our 2023 graduating class of fellows conducted vision-science research and gained outpatient, inpatient, and surgical experience in an ophthalmic subspecialty. In addition to receiving training from faculty, fellows advance their knowledge by instructing medical students and residents.

Giving Opportunities

For more than half a century, vision scientists at UCLA Stein Eye Institute have extended the boundaries of current knowledge to pursue the goal of a lifetime of good vision for everyone. This noble undertaking has significantly benefited from a strong tradition of private philanthropy.

Contributions from individuals, foundations, and corporations help underwrite priority needs, which uphold scientific innovation, patient care, training and education, and a strong commitment to community engagement. Stein Eye Institute offers a variety of giving options to those who wish to promote and participate in this tradition of excellence.

WAYS TO GIVE

Direct Gifts

Direct gifts—whether by cash, check, or credit card—are vitally important and provide Stein Eye with immediate resources, increasing the impact of these gifts.

Please make checks payable to **UC Regents**.

Endowments

Establishing an endowment is a visionary and generous act that honors the present and empowers the future. Endowments provide permanent resources that continue to grow. A portion of the annual investment income is used to support clinical, educational, and scientific initiatives, while the remaining investment yield is returned to principal. Thus, over the years, an endowment provides steady, reliable funding.

An endowment serves as an enduring legacy and can be named in honor of the donor, their family, loved ones, or another name of the donor's choosing. Giving opportunities exist for endowed chairs, endowed fellowships, and endowed funds for research, education, and patient care. These funds can be made payable over a period of up to five years.

Pledges

A pledge is a statement of intention to make a gift. Donors who seek to defer the bulk of their giving until a future date, or who want to give via installments over time, may use this giving strategy. A pledge may be followed by an immediate gift or may simply confirm a donor's intention to make a gift in the future. Pledges are typically made in concert with a preliminary first installment and provide a source of consistent and dependable funding. This method often makes it easier for donors to give higher amounts than they may have originally considered.

Securities and Wires

Gifts of appreciated securities are tax deductible at their full market value. In most cases, appreciation in the value of the security benefits the university and does not cause a taxable event for the donor.

Matching Gifts

The easiest way to double—or even triple—a contribution is for the donor to request a match from their employer. Thousands of companies nationwide support their workforce by making such gifts to the organizations and institutions their employees care about.

Real Estate

Real estate (primary residence, vacation home, commercial property, or land) is an asset that donors can leverage in a variety of ways to support UCLA Stein Eye Institute, while reducing taxes and eliminating the burden of maintaining or selling the property. A donor also can use real estate to fund gifts that provide an income stream for life.

For residential properties, it is possible to arrange a sizable tax deduction by deeding a home to

Stein Eye Institute, while continuing to occupy the property for life.

Bequests

Making a gift through a will or living trust offers the immediate satisfaction of creating a lasting and personal legacy that ensures Stein Eye's future and costs nothing now.

Charitable Gift Annuity

Donors may transfer money, securities, or real estate in trust to Stein Eye Institute and receive income for themselves or another for life. Donors may receive immediate tax benefits and, ultimately, Stein Eye receives the trust property.

Qualified Retirement Plans

Naming The UCLA Foundation as a beneficiary of some or all of a qualified retirement plan may help donors minimize taxes and maximize philanthropic impact.

Tribute Gifts

Contributions may be made in memory, honor, or celebration of a loved one, or to commemorate a special occasion. Donations can be used for unrestricted program support or be directed to any area of Stein Eye.

YOUR GIFT CAN MAKE A DIFFERENCE

In whatever way you choose to support UCLA Stein Eye Institute, you will be embarking on a partnership with one of the world's preeminent eye research centers. Such an investment will significantly expand Stein Eye's understanding of the causes of eye diseases and help develop alternative treatment options, with the ultimate goal to prevent blindness.

For information on how to incorporate UCLA Stein Eye Institute into your estate and retirement planning, or to make a gift of any kind, please contact:

Susan Lee DeRemer, CFRE
Director of Development
UCLA Stein Eye Institute Development Office
100 Stein Plaza, Room 1-124
Los Angeles, CA 90095-7000
Phone: (310) 206-6035
Cell/Text: (424) 325-9076
giving@jsei.ucla.edu

UCLA Stein Eye Institute

Find detailed information about our activities in the 2022–23 Annual Report at:



UCLA Stein Eye Institute July 1, 2022–June 30, 2023

DIRECTOR

Anne L. Coleman, MD, PhD

MANAGING EDITOR

Tina-Marie Gauthier
c/o Stein Eye Institute
100 Stein Plaza, UCLA
Los Angeles, California 90095–7000
Tina@EyeCiteEditing.com

PHOTOGRAPHY

Rich Schmitt

DESIGN

Robin Weisz/Graphic Design

For more information about the UCLA Department of Ophthalmology, see: www.uclahealth.org/eye/.

©2023 by the Regents of the University of California.

All rights reserved.



UCLA DEPARTMENT OF OPHTHALMOLOGY
Los Angeles and Beyond

UCLA

Stein Eye Institute



DOHENY
EYE INSTITUTE